



# COMMUNITY MEETING # 2

July 25, 2017

# INTRODUCTION

---

## — THE MASTER PLAN TEAM

### San Mateo County Parks

- » Gates + Associates  
(Park & Recreation Planning/Landscape Architecture)
- » WRA Environmental Consultants  
(Biological Resources Assessment)
- » Pacific Watershed Associates  
(Erosion Inventory and Assessment)

# MEETING OVERVIEW

---

## — TODAY'S AGENDA

1. Background Recap
2. Project Update
3. Table Groups and Summaries
4. Questions/Feedback
5. Next Steps

# INTRODUCTION

## SCOPE OF MASTER PLAN DOCUMENT

### Existing Conditions Assessment

- » Biological Assessment
- » Sediment Source Reduction Plan
- » Existing Uses
- » ADA accessibility

### Community Outreach Process/Input

### Preferred Plan

- » Park Uses and Amenities
- » Vehicle and Trail Access and Travel
- » Infrastructure
- » Signage and Interpretive Opportunities

### Management Guidelines

### Partnerships

### Implementation and Phasing



# INTRODUCTION

## PROJECT SCHEDULE

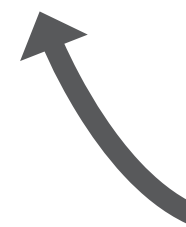
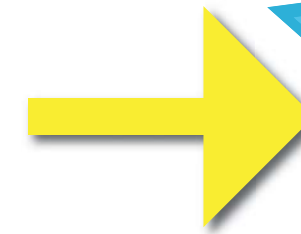
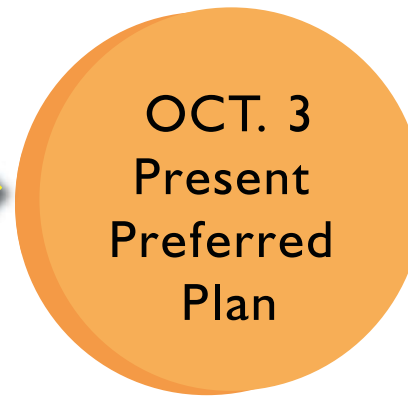
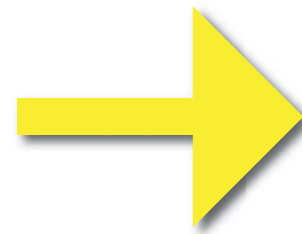
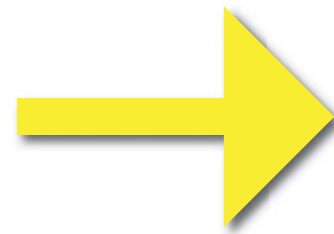
Existing Conditions Assessment

Survey

Alternatives Development

Refine Preferred Alternative

Draft Master Plan +  
Public Comment Period



YOU ARE HERE

Check web site for updates on survey  
[parks.smcgov.org/quarry-park](http://parks.smcgov.org/quarry-park)



**QUARRY PARK**  
MASTER PLAN

# BACKGROUND

## EFFORTS TO DATE

Mid-Coast Recreational Needs Assessment (2002)

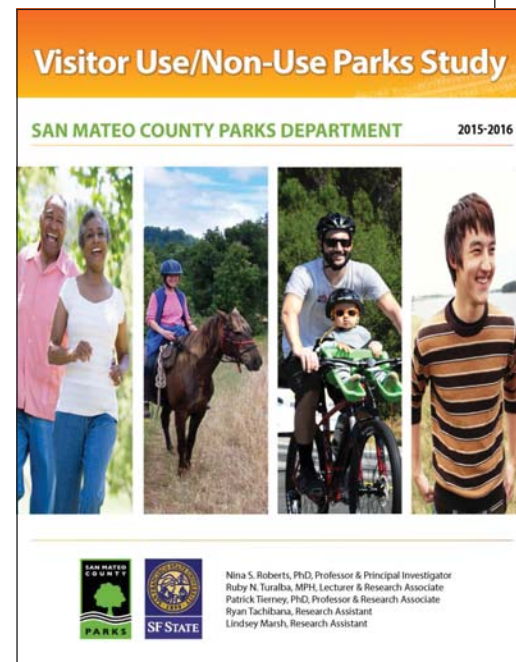
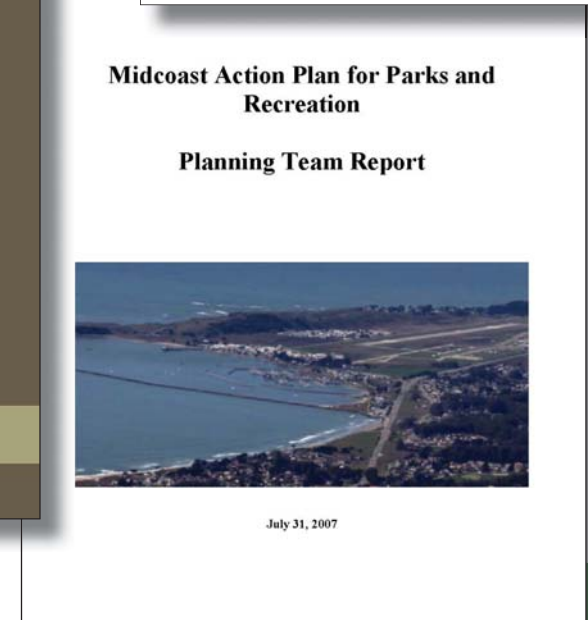
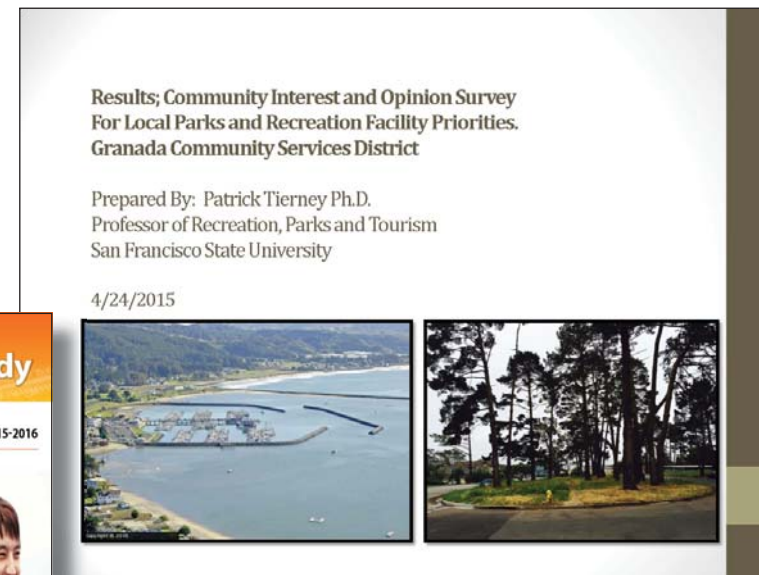
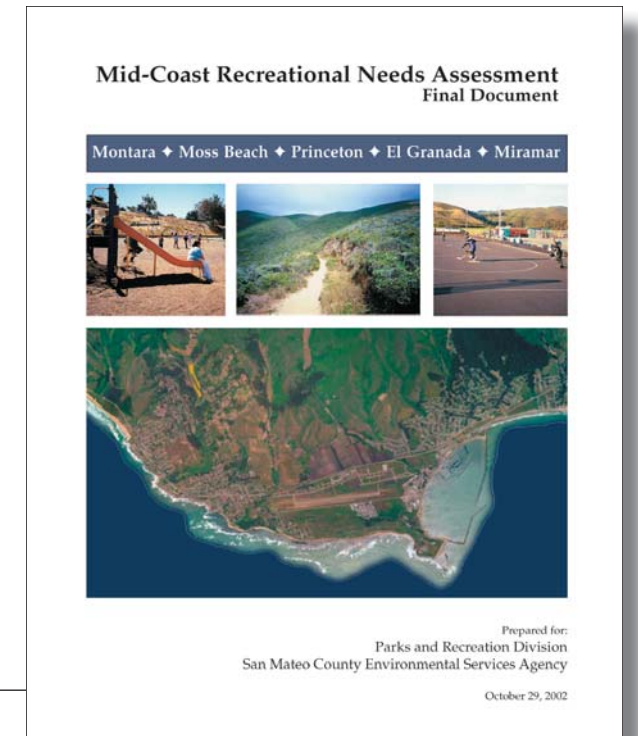
Midcoast Park Action Plan (2007)

Granada Community Services District Survey (2016)

County Parks Visitor Survey (2016)

### Consistent Priorities

- » Hiking
- » Dog Walking
- » Cycling
- » Swimming
- » Picnic
- » Playgrounds



# BACKGROUND

## RECENT IMPROVEMENTS

- » Surfer's Beach Coastal Trail Improvements
- » Mirada Surf Coastal Trail
- » San Vicente Creek Restoration
- » Moss Beach Park
- » Clipper Ridge Playground
- » Quarry Park Playground



*San Vicente Creek Restoration*



*Surfer's Beach*



*Moss Beach Playground*



*Mirada Surf Phase III*

# BACKGROUND

## PARALLEL TRAIL



— — — — — Approximate Trail Alignment





# BACKGROUND

## DOGS IN PARKS

- » Dog management committee currently developing policy recommendations, which are to be presented to Parks Commission in December 2017
- » Upcoming meetings:
  - August 21, 2017 at 2:30 pm
  - San Mateo County Parks
  - 455 County Center, 4th Floor, Redwood City



San Mateo County Parks Dog Committee web page:

[parks@smcgov.org/dogs-at-SMC-parks](mailto:parks@smcgov.org/dogs-at-SMC-parks)

# PROJECT UPDATE

---

## EFFORTS SINCE MAY

- » Meeting #1 Summary
- » Online Survey Results
- » Technical Studies Analysis
- » Draft Trail Plan
- » Program Alternatives for Quarry Entry Flat

# PROJECT UPDATE

## COMMUNITY MEETING # 1

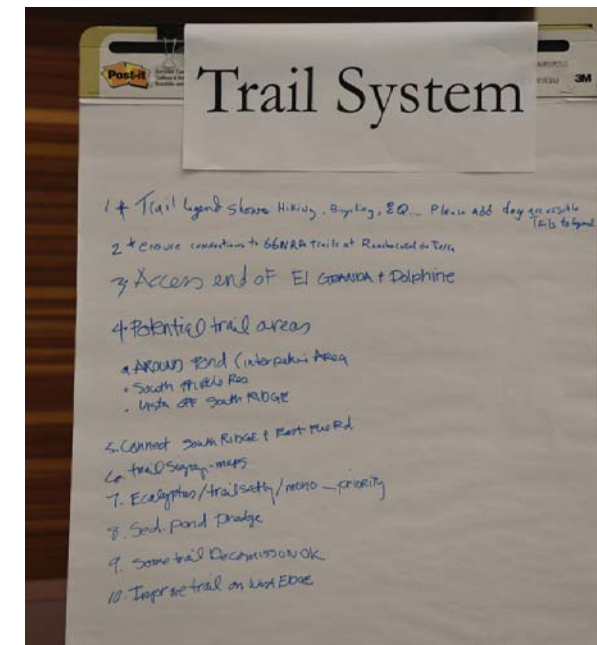
» Project Scope and Background

» Breakout Stations

- Trails Network
- Existing and Potential Uses
- Technical Studies

» Feedback helped inform survey questions

- Desire for designated trails for mountain biking
- Dogs access a priority
- Concerns about drainage/erosion
- Concerns about fire
- Desire for pump track
- Concerns about native vs. invasive vegetation



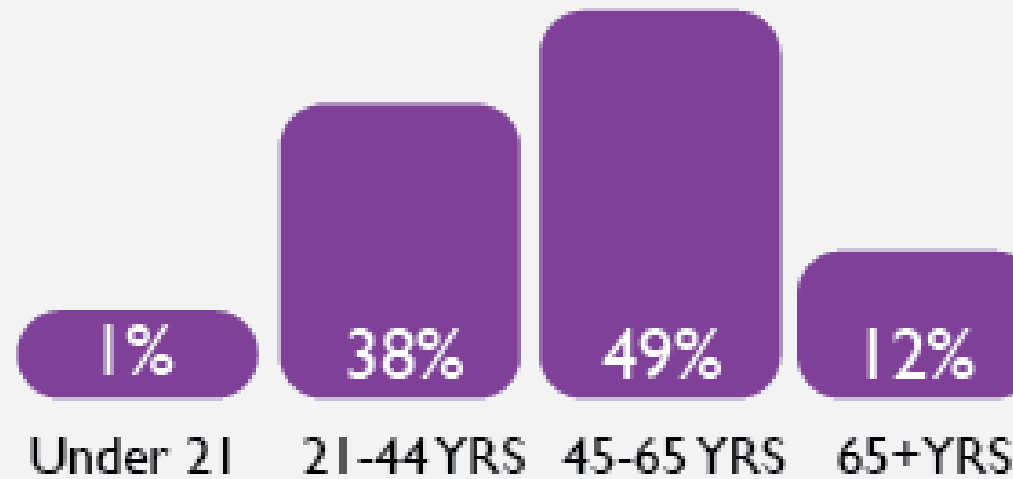
# PROJECT UPDATE

## ONLINE SURVEY RESULTS

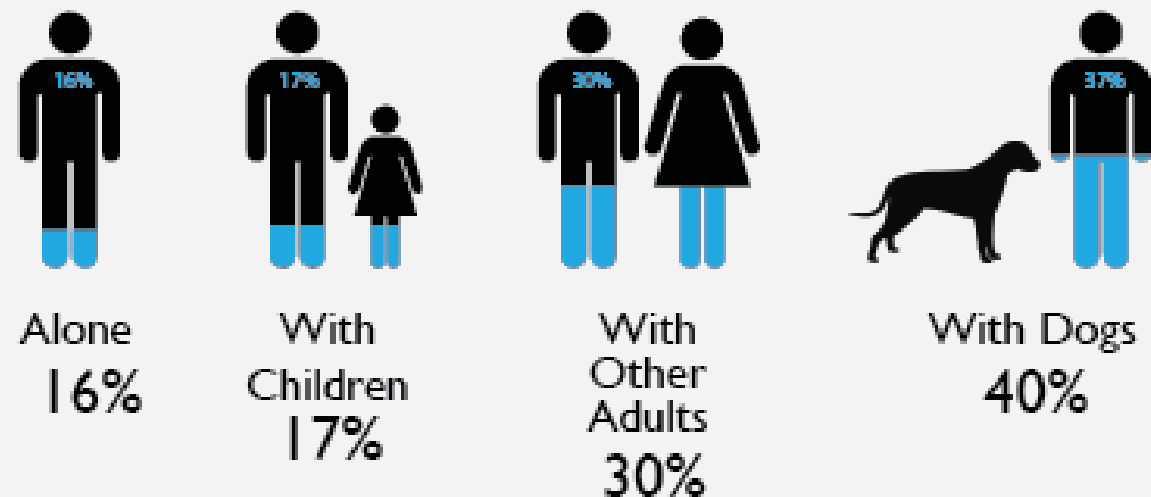
TOTAL # OF ONLINE SURVEY PARTICIPANTS: 235

OPENED JUNE 12, 2017  
RESPONSE COLLECTED FOR 37 DAYS

### AGE



### WHO DO YOU ATTEND QUARRY PARK WITH?



# PROJECT UPDATE

## ONLINE SURVEY RESULTS

PARK IMPROVEMENTS: HOW IMPORTANT ARE THE FOLLOWING POTENTIAL PARK IMPROVEMENTS?



» E-mails received requesting pickleball

# PROJECT UPDATE

## ONLINE SURVEY RESULTS

TRAIL IMPROVEMENTS: HOW IMPORTANT ARE THE FOLLOWING TRAIL IMPROVEMENTS?

82%

Establish Trails for Designated Uses Ex: Mountain Biking, On-Leash Dog Walking, Equestrian)

80%

Create Connection To Golden Gate National Recreation Area

72%

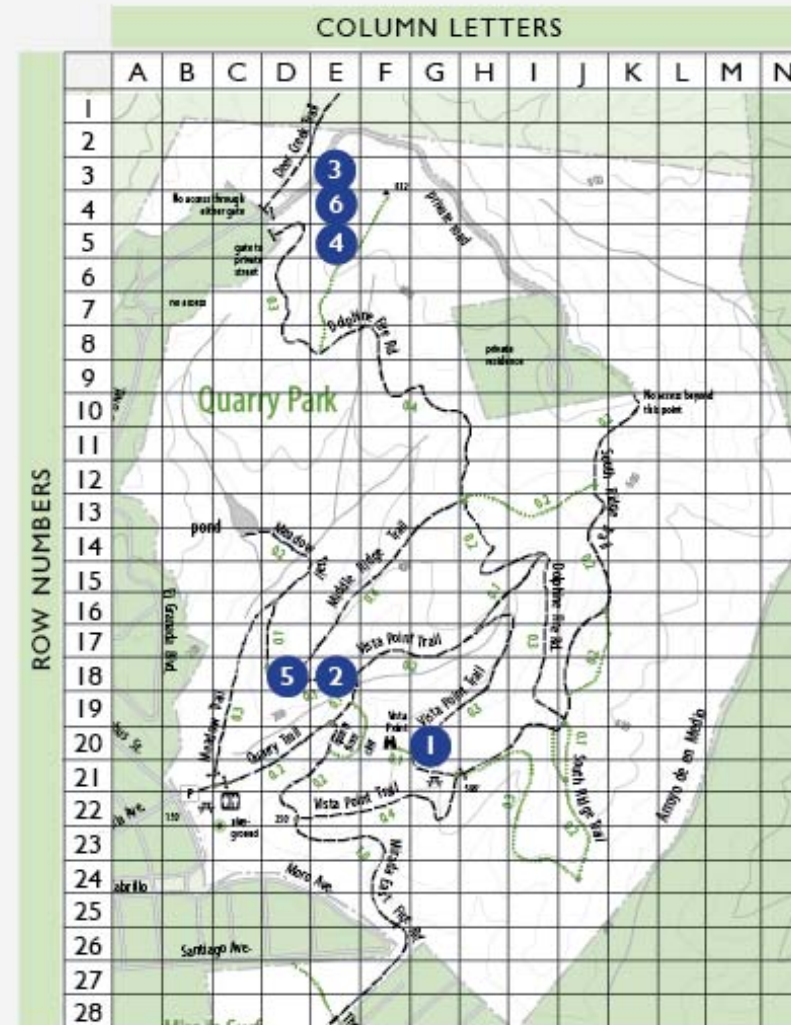
Establish Connection Between Mirada Fire Rd. To South Ride Trail

68%

Improve Trail Along Western Edge Of the Park

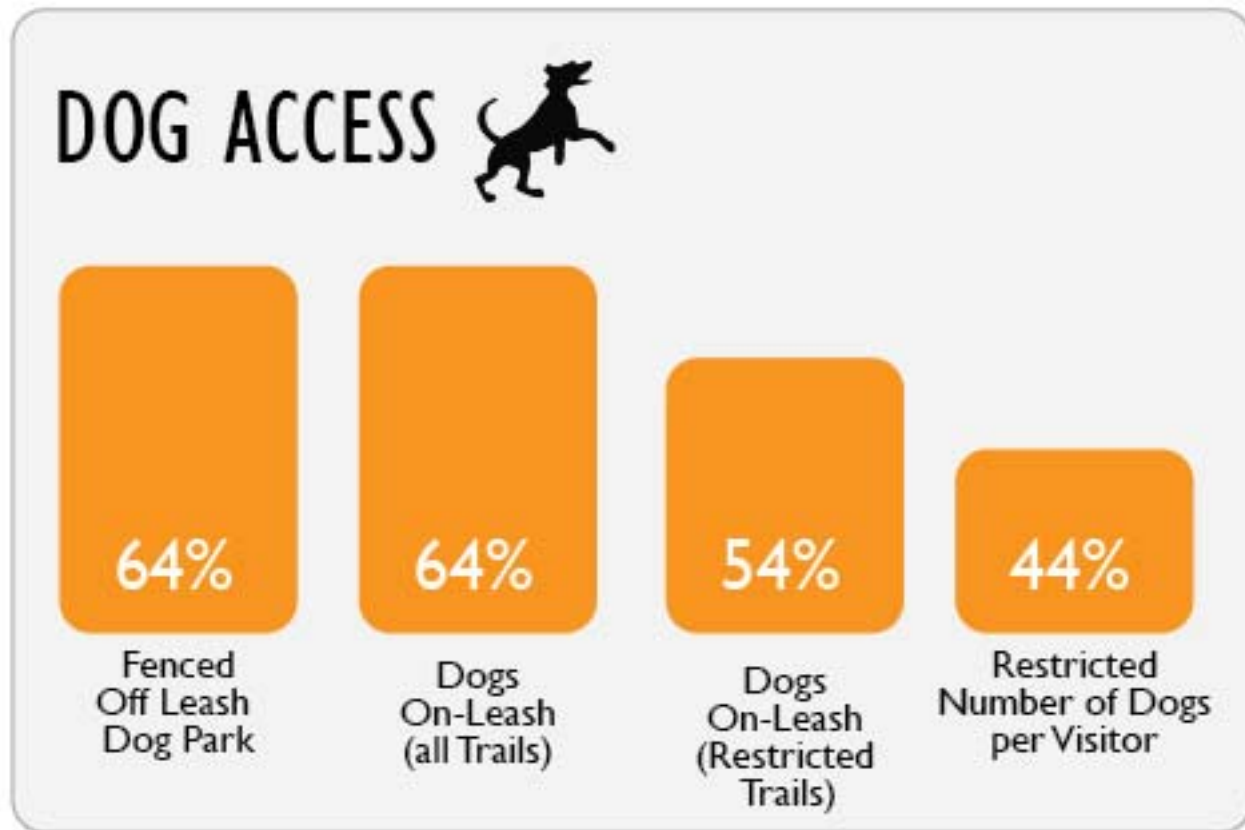


### VISTA POINTS:

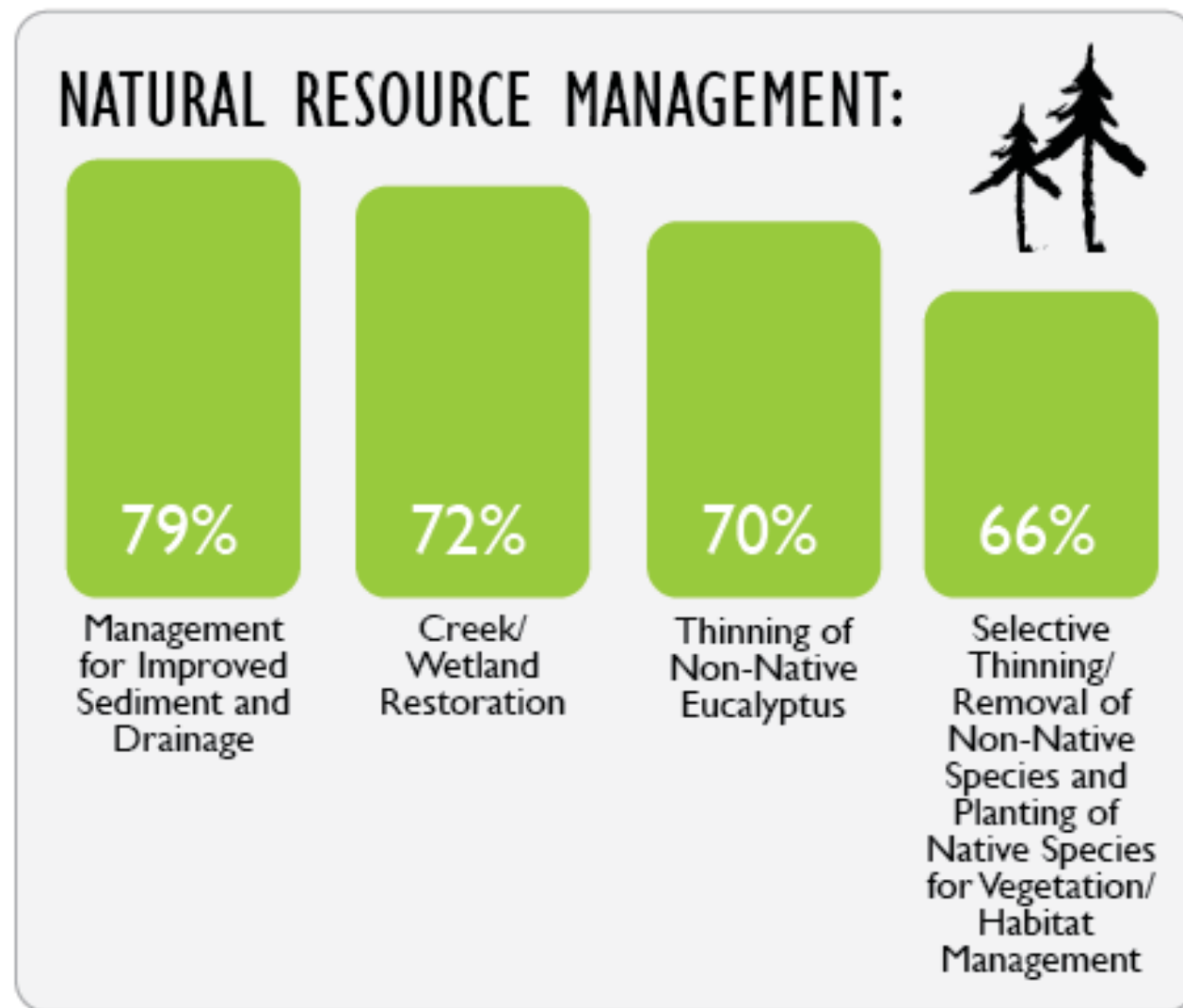


# PROJECT UPDATE

## ONLINE SURVEY RESULTS

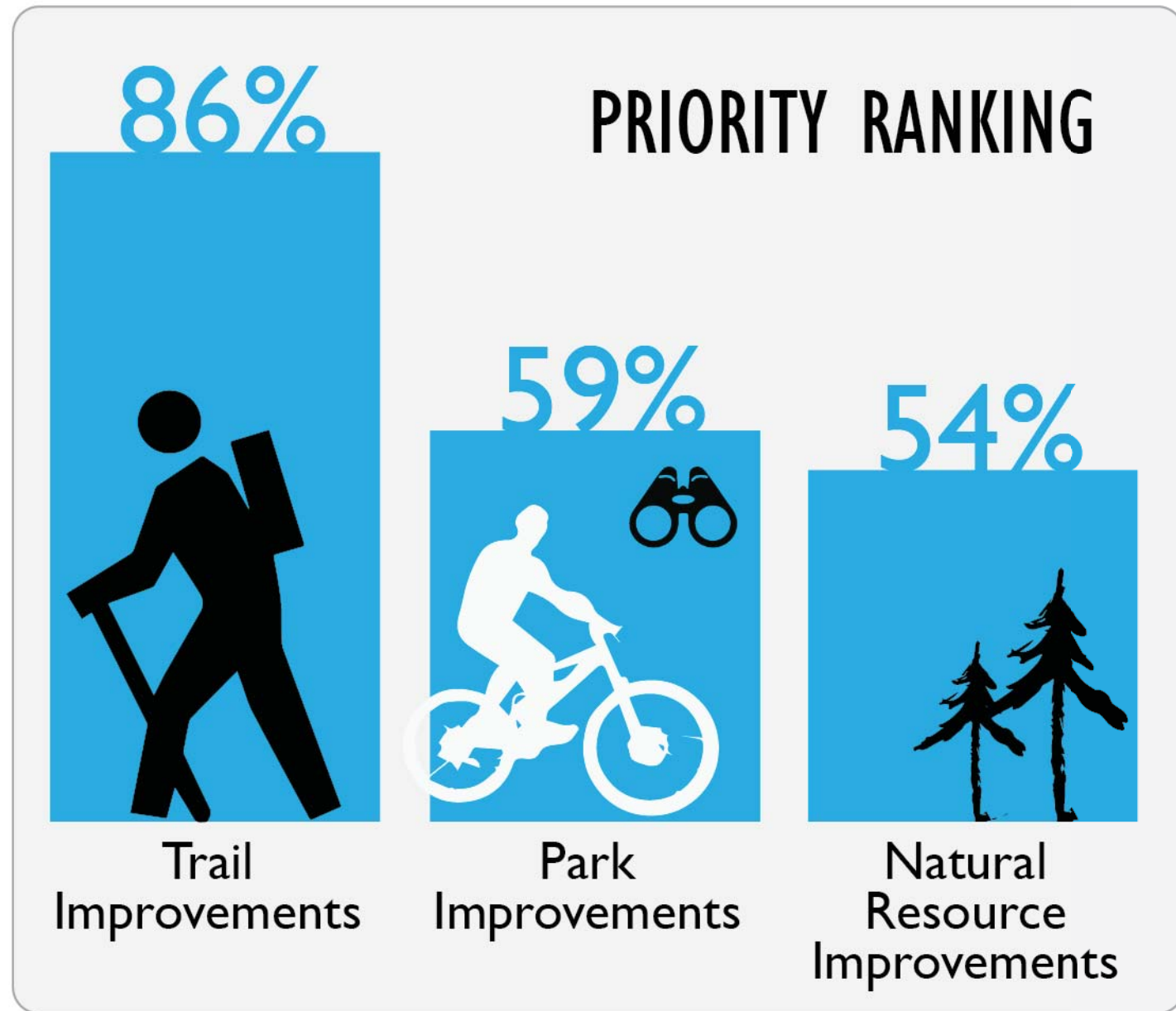


\*25% of the comments requested off leash dog trails



# PROJECT UPDATE

## ONLINE SURVEY RESULTS





# PROJECT UPDATE

## SEDIMENT SOURCE ASSESSMENT



*Quarry Park Overlook*



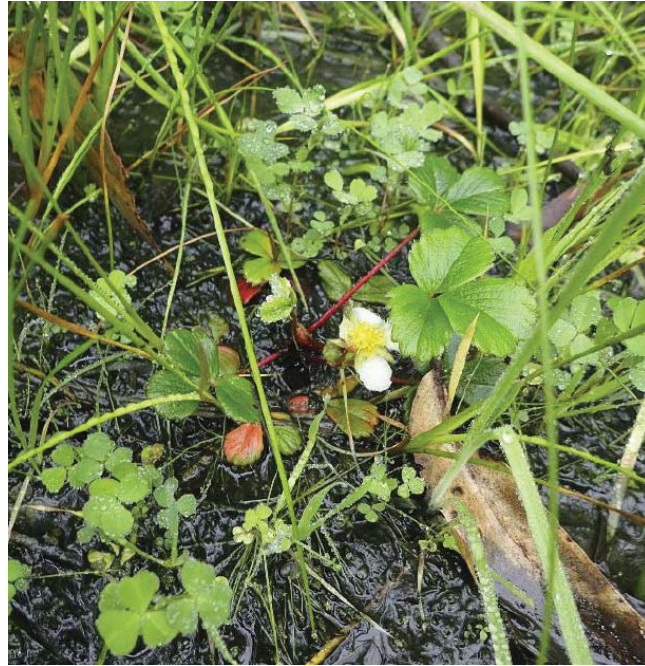
*Run-off into residential areas*

- » Overlook closed for safety due to erosion
  - Master Plan to propose new location
  
- » Decision made to retain existing pond for:
  - Drainage functions
  - Program opportunities (rest area, educational signage)
  
- » Team working to identify priority areas for drainage and roads/trails to maintain/improve. Considerations:
  - Public health and safety
  - Biological sensitivity and ecological function
  - Accessibility
  - Preferred road/trail network and park uses
  - Aesthetics
  - Costs



# PROJECT UPDATE

## BIOLOGICAL ASSESSMENT



*Woodland Strawberry*



*Northern Coastal Scrub*

- » Restoration possibilities extremely limited due to size of site, extent of invasive species and very limited budgets.
- » Best potential is to preserve/enhance/expand northern coastal scrub areas on edges of site
- » Team working to identify potential enhancement opportunities to synergize with other repairs or improvements.



# PROJECT UPDATE

## DOG WASTE MANAGEMENT

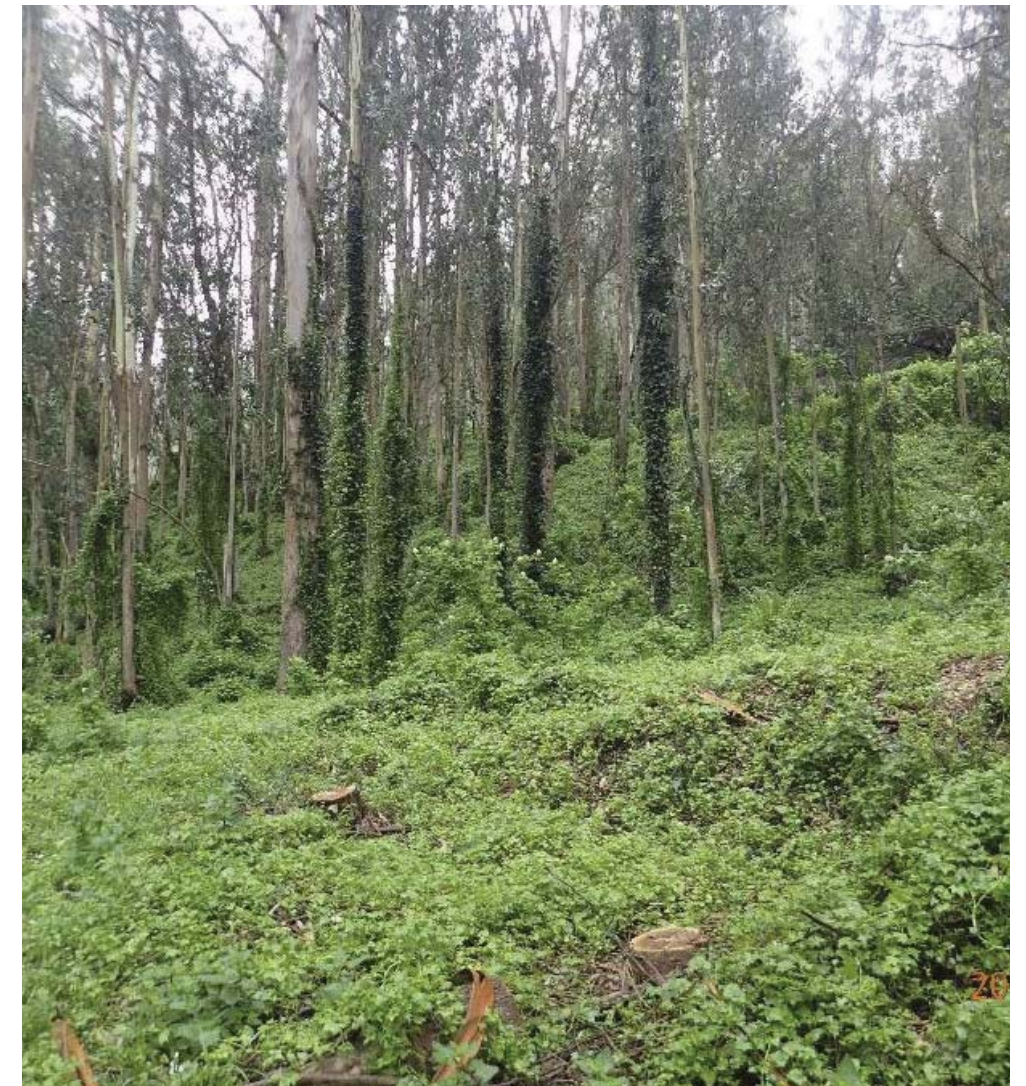
- » Cleaning up your dog's waste is critical for the environment
- » Dog waste is NOT part of the natural ecosystem
- » Contains bacteria and nitrogen that enters waterways and is harmful to animals, fisheries, creeks and streams
- » Committee expected to present dog management recommendations to County Parks Commission in December 2017



# PROJECT UPDATE

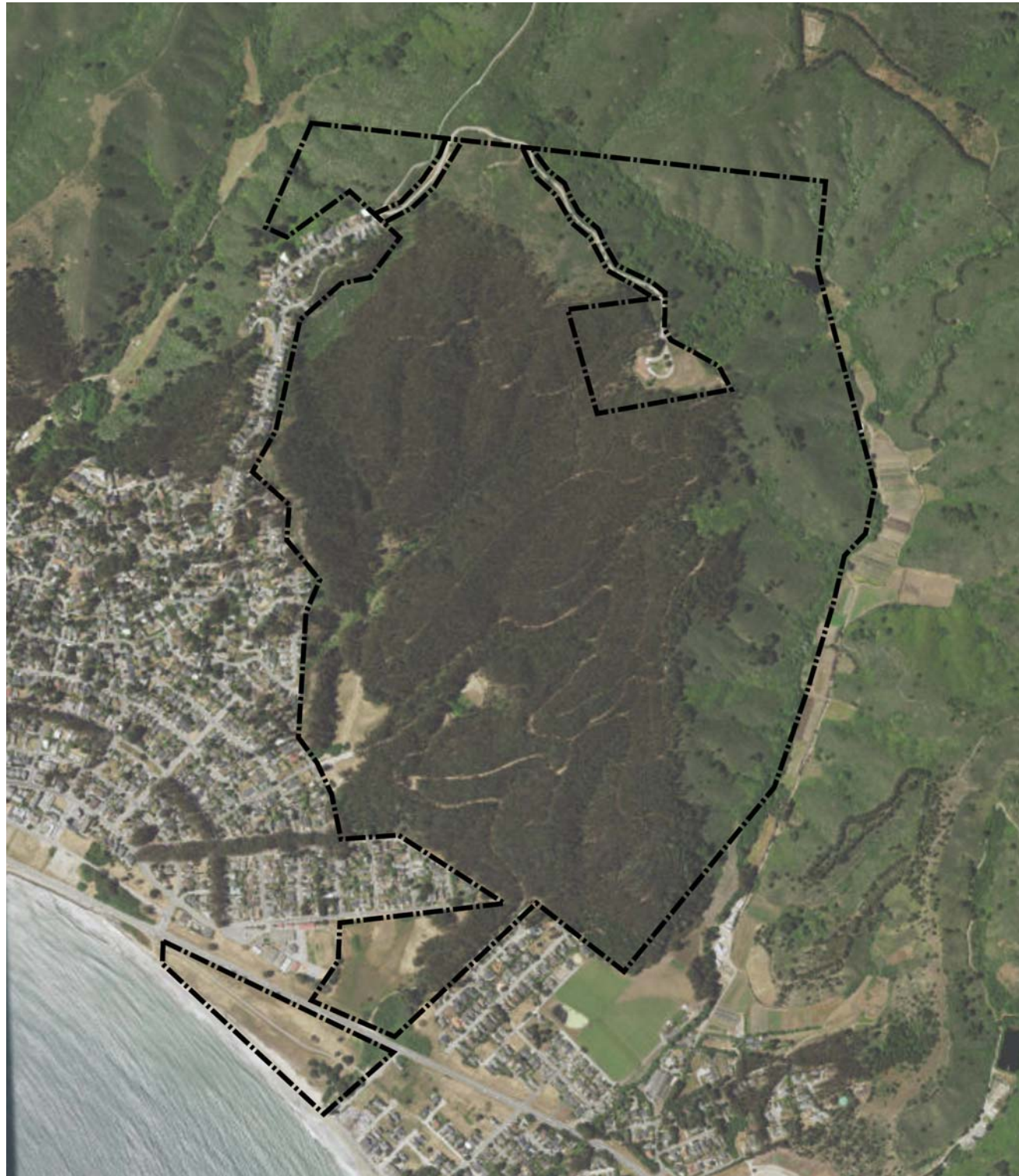
## FIRE MANAGEMENT

- » A key consideration in developing the final roads/trails network and prioritizing recommendations
- » Maintenance of existing fire buffers on north and south sides of the park
- » Master plan to identify fire management goals and priorities for when funds become available.



# DRAFT TRAILS NETWORK

---

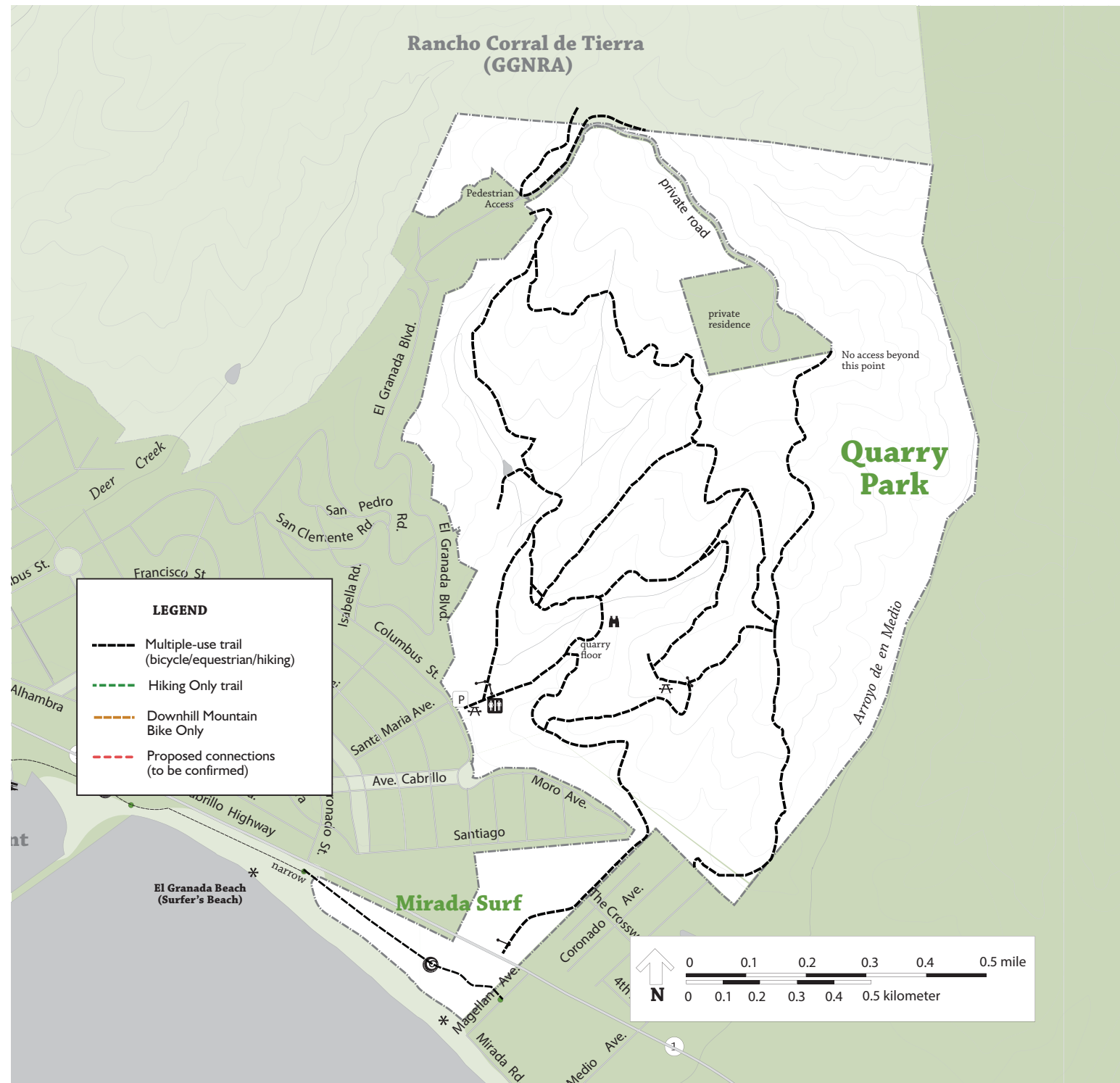


## Considerations

- » Importance for emergency vehicle access, fire management, maintenance
- » Impacts on sediment/drainage
- » Impacts on natural resources
- » Recreation value
- » Creation of loops and connections

# DRAFT TRAILS NETWORK

## MULTIPLE USE TRAILS



- » No change in multiple use trails network from current map anticipated at this time
- » Repairs and drainage improvements needed and will be recommended and prioritized
- » Revision to County ordinance regarding bicycles to be recommended
- » Signage to be recommended

# DRAFT TRAILS NETWORK

## HIKING ONLY TRAILS



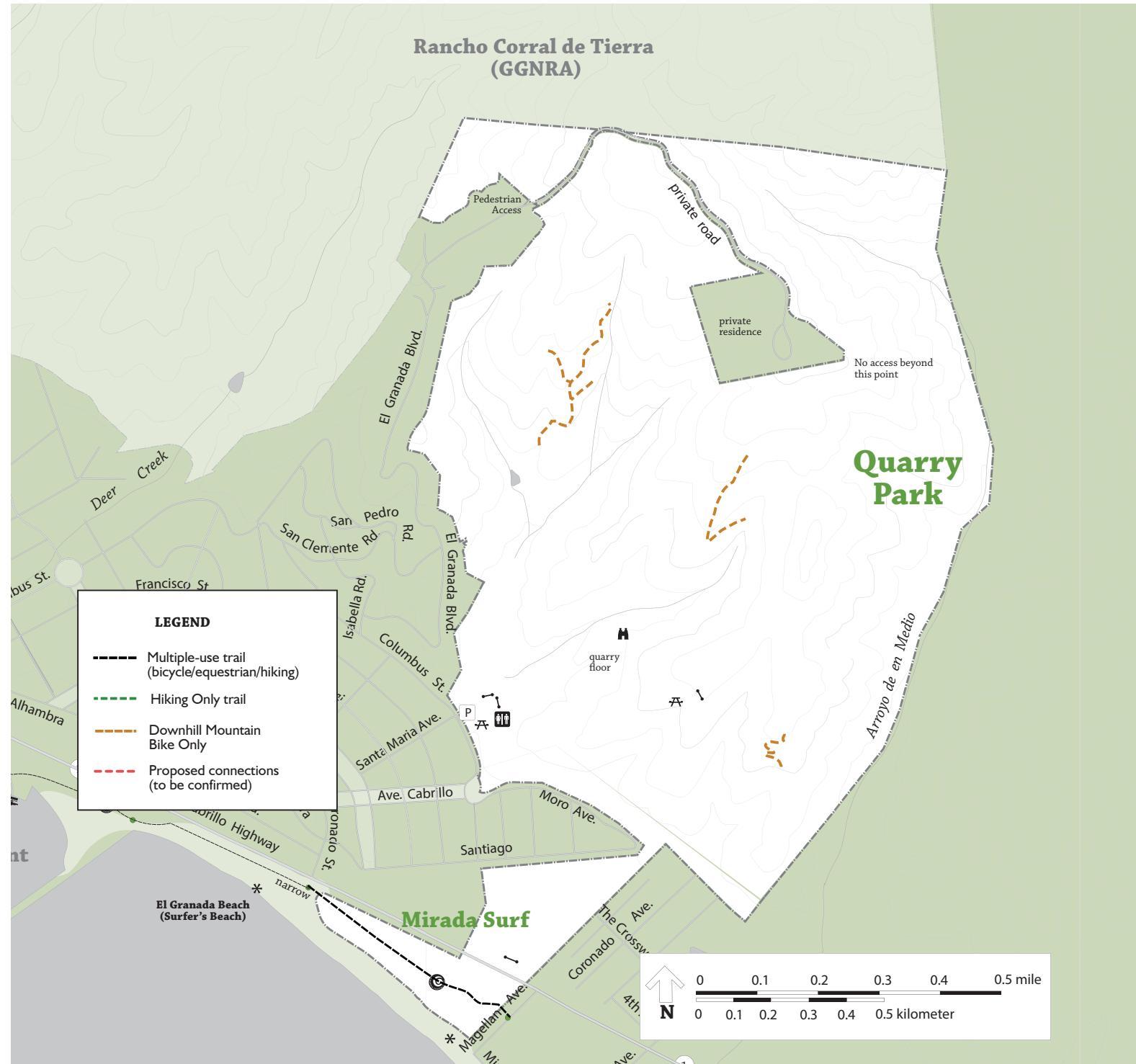
» Bicycles not permitted

» Signage to be recommended

» Additional opportunities may be identified as studies progress

# DRAFT TRAILS NETWORK

## MOUNTAIN BIKE ONLY TRAILS

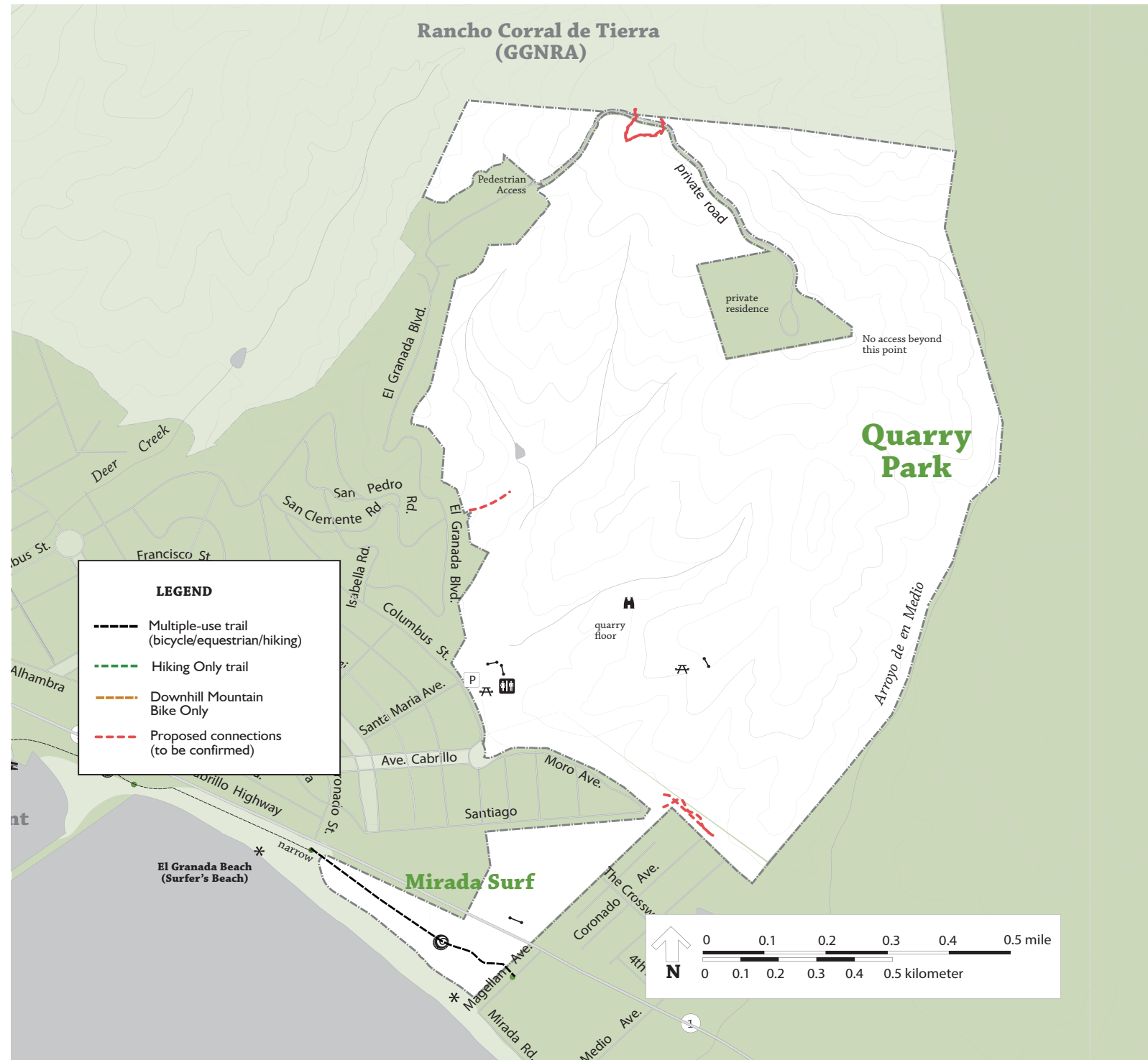


- » Potential downhill mountain bike trails identified
- » Revision to County ordinance to be recommended
- » Signage to be recommended (identification, safety)



# DRAFT TRAILS NETWORK

## CONNECTIONS

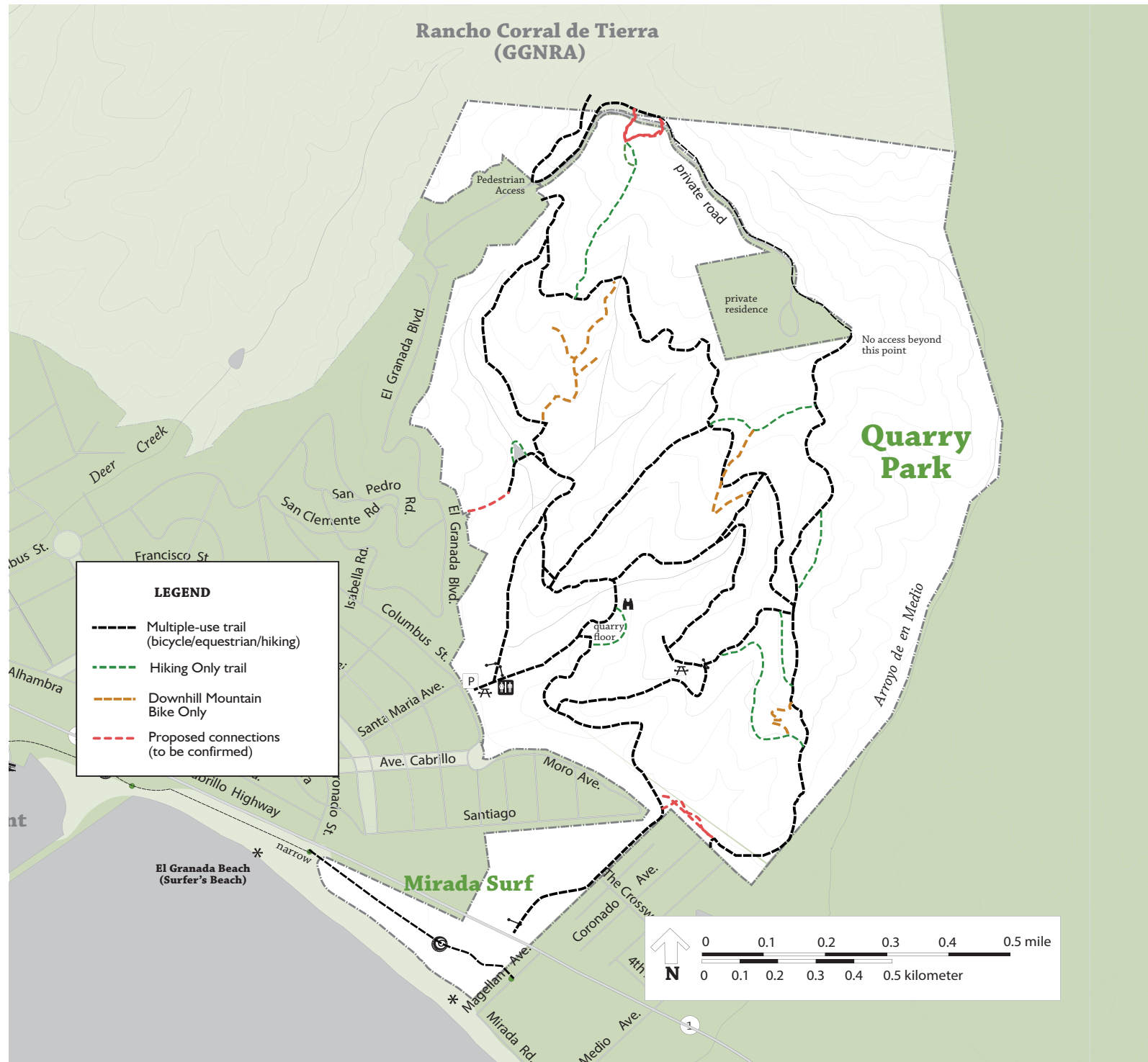


» Recommended connections to GGNRA (needed easements to be explored)

» Connection between South Ridge Trail and Mirada Surf East to creat loop

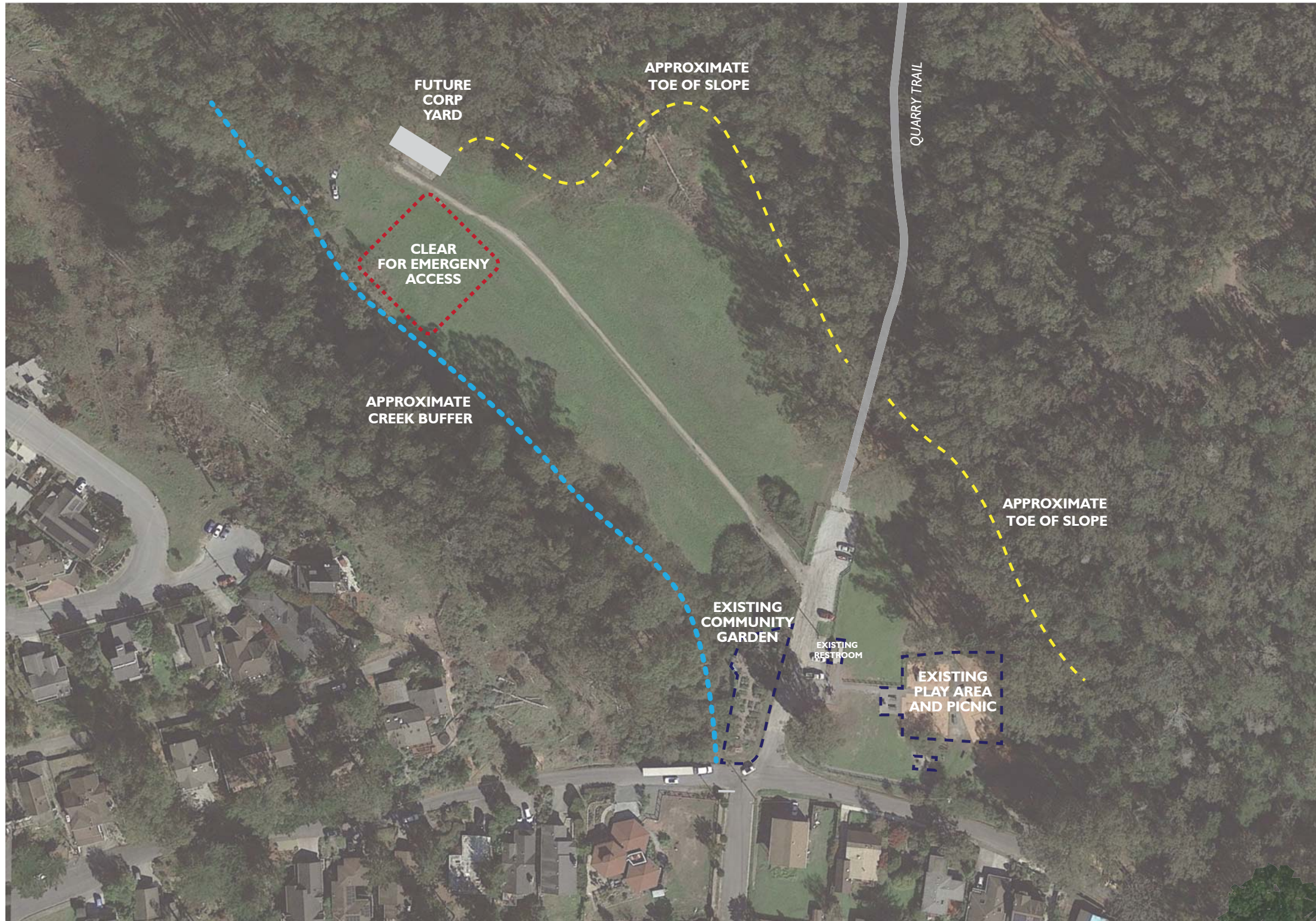
# DRAFT TRAILS NETWORK

ALL



» Team continuing to review trail network based on data from technical studies

# POTENTIAL NEW USES



EXISTING CONDITIONS

**QUARRY PARK**  
MASTER PLAN

# POTENTIAL NEW USES



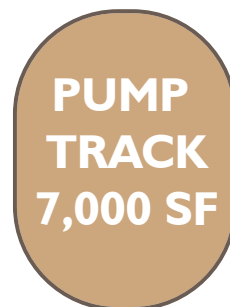
Fenced Off-Leash Dog Park\*

- » Small: +/- 0.5 acre
- » Large: +/- 1 acre



Pump Track

- » +/- 7,000 sf



Bocce

- » 23' x 100' each



# POTENTIAL NEW USES



## Pickleball

» 40' x 64' each

PICKLE  
BALL



## Disk Golf

» min. 0.5 acre per hole

» +/- 2 acres shown here

DISC GOLF  
(2 ACRES)



## Additional Parking

» 10 spots shown

PARKING  
(10 stalls)

QUARRY PARK  
MASTER PLAN

# YOU CAN HELP

---

Partnerships needed to make new uses possible:

- » design input
- » funding
- » maintenance and stewardship

## Friends

## Of...

Possible “Friends of” opportunities:

- » Dog facilities
- » Pump Track
- » Bocce
- » Pickleball

# INPUT STATIONS

DRAFT TRAILS MAP

QUARRY POTENTIAL USES

DRAFT TECHNICAL STUDIES

# INPUT STATIONS

---

## STATION SUMMARIES



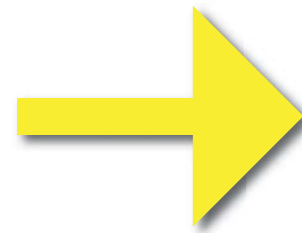
# NEXT STEPS

Existing Conditions Assessment

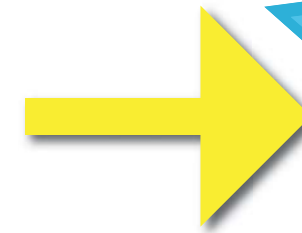
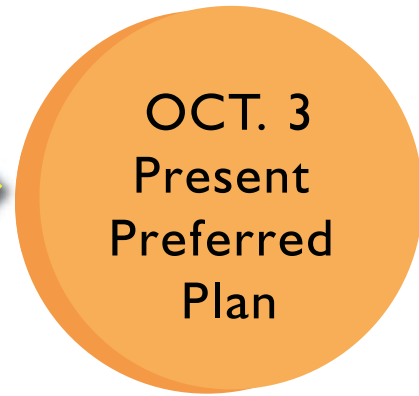


Survey

Alternatives Development



Refine Preferred Alternative



Draft Master Plan +  
Public Comment Period



HOPE TO SEE  
YOU HERE!



# DOG COMMITTEE

---

- » Dog management committee currently developing policy recommendations
- » Recommendations to Parks Commission expected December 2017
- » Upcoming meetings:
  - August 21



San Mateo County Parks Dog Committee web page:  
[parks@smcgov.org/dogs-at-SMC-parks](mailto:parks@smcgov.org/dogs-at-SMC-parks)



# FIRE RESOURCES

---

## » FIRE SAFE San Mateo County

Dedicated to maintaining quality of life by protecting property and the environment in the wildland/urban interface zones through public/private partnerships, education and fuel reduction

» Meetings every other month. See web page.

Annual BBQ: August 9, 11:30 am - 1:30 pm  
Jasper Ridge Preserve

FIRE SAFE San Mateo web page:  
[firesafesanmateo.org](https://firesafesanmateo.org)



Page from 'Living with Fire'



*THANK YOU*

[parks.smcgov.org/quarry-park](https://parks.smcgov.org/quarry-park)

A green silhouette of a landscape featuring a single tree on a hill and a cluster of trees on the right. A blue horizontal bar is at the bottom left.

**QUARRY PARK**  
MASTER PLAN