



James C. Porter
Director

County Government Center
555 County Center, 5th Floor
Redwood City, CA 94063
650-363-4100 T
650-361-8220 F

www.smcgov.org

January 8, 2021

COUNTY OF SAN MATEO

**MIDDLEFIELD ROAD IMPROVEMENT PROJECT
IN THE NORTH FAIR OAKS AREA**

**TOTAL PROJECT APPROXIMATELY 0.5 MILE IN LENGTH
WITH APPURTENANT WORK THERETO
IN SAN MATEO COUNTY**

**COUNTY PROJECT NO. OD420
PROJECT FILE NO. E4931**

ADDENDUM NO. 5

TO ALL PLAN HOLDERS:

The following **Addendum No. 5** to the above referenced project, dated October 16, 2020, shall be included in the project plans and specifications.

1. Pages 4 (rev1) – 17 (rev1) of the NC (Notice to Contractor) Section shall be replaced in the Project Specifications:

Replace pages 4 (rev1) – 17 (rev1) of the NC Section with pages 4 (rev2) – 17 (rev2).

2. Page 105 of SP (Special Provisions) Section shall be replaced in the Project Specifications:

Replace page 105 of the SP Section with page 105 (rev).

3. Page 397 of SP (Special Provisions) Section shall be replaced in the Project Specifications:

Replace page 397 of the SP Section with page 397 (rev).

4. Pages 4 (rev1) – 24 (rev 1) of the PR (Proposal) Section shall be replaced in the Project Specifications:

Pages 4 (rev1) – 24 (rev1) of the PR Section with pages 4 (rev2) – 24 (rev2).

To All Plan Holders
Middlefield Road Improvements Project
Addendum No. 5
January 8, 2021

Page 2

5. Sheet JT-4 (rev) shall be replaced in the Project Plans:

Replace Plan Sheet JT-4 (REV) with Plan Sheet JT-4 (REV1).

Please sign and return the attached "Receipt of Addendum No. 5" form. The "Receipt of Addendum No. 5" form MUST be received in this office no later than 4:00 PM, Wednesday, January 13, 2021 or the bid will NOT be considered. The Receipt of Addendum can be emailed to Gil Tourel's attention email at gtourel@smcgov.org.

If you have any questions or require additional information, please contact Monika Raman, Carter Choi, or Gil Tourel of our office at (650) 363-4100. They can also be reached by e-mail at:

mraman@smcgov.org
cchoi@smcgov.org
gtourel@smcgov.org

Very truly yours,



James C. Porter
Director of Public Works

JCP:AMS:GT:CC:MR

F:\Users\design\C3D\E4931000_Middlefield Rd\Bid Process\Addendums (OD420)\Addendum No.5\Addendum No.5 Cover Letter.doc

Encl.- "Receipt of Addendum No. 5" Form

Revised Pages 4 (rev 2) – 17 (rev2) of the NC (Notice to Contractor) Section
Revised Page 105 (rev) of the SP (Special Provisions) Section
Revised Page 397 (rev) of the SP (Special Provisions) Section
Revised Pages 4 (rev2) - 24 (rev2) of the PR (Proposal) Section
Revised Sheet JT4 (REV1) of the Plans

cc: Ann M. Stillman, Deputy Director, Engineering and Resource Protection
Gil Tourel, Principal Civil Engineer, Engineering and Construction
Carter Choi, Senior Civil Engineer, Project Development and Design
Monika Raman, Associate Civil Engineer, Project Development and Design





James C. Porter
Director

County Government Center
555 County Center, 5th Floor
Redwood City, CA 94063
650-363-4100 T
650-361-8220 F

www.smcgov.org

January 8, 2021

COUNTY OF SAN MATEO
MIDDLEFIELD ROAD IMPROVEMENT PROJECT
IN THE NORTH FAIR OAKS AREA

TOTAL PROJECT APPROXIMATELY 0.5 MILE IN LENGTH
WITH APPURTENANT WORK THERETO
IN SAN MATEO COUNTY

COUNTY PROJECT NO. OD420
PROJECT FILE NO. E4931

RECEIPT OF ADDENDUM NO. 5

I, _____, an
authorized representative for

_____, have received
Addendum No. 5 for the Middlefield Road Improvement Project from an authorized
representative of the County of San Mateo, to be included in the Plans and Specifications
for the above referenced project.

This form must be signed and received in the offices of the County of San Mateo,
Department of Public Works ***no later than 4:00 PM, Wednesday, January 13, 2021.***

“Contractor”

(Print)

(Signature)

(Date)

ENGINEER'S ESTIMATE

**MIDDLEFIELD ROAD IMPROVEMENT PROJECT
IN THE NORTH FAIR OAKS AREA
TOTAL PROJECT APPROXIMATELY 0.5 MILES IN LENGTH
WITH APPURTENANT WORK THERETO
IN SAN MATEO COUNTY**

A BID IS REQUIRED FOR THE ENTIRE WORK DESCRIBED HEREIN FOR SCHEDULE A AND SCHEDULE B. THE AWARD OF CONTRACT, IF AWARDED, WILL BE MADE ON THE BASIS OF THE LOWEST SUM TOTAL OF BOTH SCHEDULE A AND SCHEDULE B.

SCHEDULE A (EXCLUDES JOINT TRENCH):

Item No.	Section No.	Estimated Quantity	Unit of Measure	Item Description
1	10	1	LS	Construction Waste Management
2	11	1	LS	Mobilization
3	11-3	1	LS	Water Pollution Control
4	12	1	LS	Maintaining Traffic
5	12-2	1	LS	Temporary Pavement Delineation
6	15-2	14,810	LF	Sawcut Asphalt Concrete and Portland Cement Concrete
7A	15-3	6	EA	Adjust Storm Drain Manholes to Grade
7B	15-3	19	EA	Adjust Telecom Manholes to Grade
8A	15-4	1	EA	Reconstruct Storm Drain Manhole to Grade
8B	15-4	1	EA	Reconstruct Telecom Manhole to Grade
9	15-5	39	EA	Adjust Water Valve Box to Grade (Cal Water)
10	15-6	48	EA	Adjust Water Meter Box to Grade (Cal Water)
11	15-7	15	EA	Adjust Monument Box Cover to Grade
12	15-8	4,000	SY	Remove Portland Cement Concrete Pavement
13	15-9	50	EA	Pothole and Protect Existing Utilities
14	15-10	2	EA	Temporary Relocation and Reinstallation of United States Postal Service Mailboxes
15	15-11	2	EA	Remove Telephones
16	15-12	110	EA	Adjust Sanitary Sewer Cleanout Box to Grade
17	15-13	1	EA	Adjust PG&E Utility Vault to Grade

ENGINEER'S ESTIMATE (SCHEDULE A) – Continued on Next Page

ENGINEER'S ESTIMATE (SCHEDULE A) – Continued from Previous Page

Item No.	Section No.	Estimated Quantity	Unit of Measure	Item Description
18	15-14	1	LS	Relocation Of Health Clinic Existing Fire Hydrant, Fire Department Connection And Sign And Regrading And Replanting Of Bioretention Area
19	15-15	5	EA	Adjust Existing Gas Valve to Grade
20	15-16	16	EA	Adjust Pull Boxes
21	15-17	1	EA	Relocate Pull Boxes
22	15-18	1	EA	Protect Bollard
23	15-19	1	EA	Adjust Existing Monitoring Well to Grade
24	15-20	4	EA	Remove Existing Pedestrian Signals
25	15-21	1	LS	Remove Concrete Curbs, Gutters, Sidewalks, Driveway Openings, Sidewalk Access Ramps, Valley Gutters and Medians
26	15-22	<u>21,790</u>	SY	Remove Asphalt Concrete Paving, Pavement Fabric, Aggregate Base
27	16	1	LS	Clearing and Grubbing
28	16-1	1	EA	Remove Trees
29	17	1	LS	Develop and Apply Water
30	19-1	<u>10,066</u>	CY	Roadway Excavation
31	20	1	LS	Erosion and Sediment Control
32	25	60	CY	Aggregate Subbase (Class 4)
33	26	<u>4,404</u>	CY	<u>Aggregate Base (Class 2)</u>
34	36	34	EA	Drainage Inlet Marker
35	37-2	1	EA	Remove and Relocate Existing Drainage Inlet
36	37-2	2	EA	Install New Drainage Inlet
37	37-3	13	EA	Clean and Inspect Existing Drainage Inlet
38	39-1	<u>8,102</u>	TON	Asphalt Concrete (Type B, 1/2" Maximum, Medium grading)
39	39-3	114	SY	Place Asphalt Concrete (Miscellaneous Areas)
40	39-4	<u>11,204</u>	SY	Plane Asphalt Concrete Pavement (Full Width)
41	40	3,000	SF	Portland Cement Concrete Pavement (Bus Pads)
42	51-2	<u>141</u>	CY	Class 2 Concrete (Minor Structures)
43	51-3	<u>886</u>	CY	Class 3 Concrete
44	51-4	30	EA	Sidewalk Access Ramps (Case A)
45	51-4	1	EA	Sidewalk Access Ramp (Case B with Retaining Curb)
46	51-4	2	EA	Sidewalk Access Ramps (Case C with Retaining Curb)

ENGINEER'S ESTIMATE (SCHEDULE A) – Continued on Next Page

ENGINEER'S ESTIMATE (SCHEDULE A) – Continued from Previous Page

Item No.	Section No.	Estimated Quantity	Unit of Measure	Item Description
47	51-4	6	EA	Sidewalk Access Ramps (Case C without Retaining Curb)
48	51-4	2	EA	Sidewalk Access Ramps (Case F)
49	51-6 (S)	400	LF	Red Curb Painting at No Parking Zones
50	56-1	40	EA	Install New Roadside Signs
51	56-2	75	EA	Remove and Reset Existing Roadside Signs
52	68-3	160	LF	PVC Underdrains
53	68-5	600	LF	Sidewalk Underdrains (Ductile Iron)
54	75 (F)	2,850	LBS	Miscellaneous Iron and Steel
55	81 (S)	14	EA	Survey Monument
56	84-3 (S)	14,000	SF	Thermoplastic Pavement Marking (Crosswalks and Legends)
57	84-3 (S)	22,000	LF	Thermoplastic Striping (by color)
58	85 (S)	81	EA	Pavement Markers, Type D (Two-way, Yellow, Retroreflective)
59	85 (S)	54	EA	Pavement Markers, Type G (Two-way, Yellow, Retroreflective)
60	85 (S)	8	EA	Pavement Markers, Hydrant Marker (Blue Reflective)
61	86-2 (S)	15	EA	Install New Traffic Signal
62	86-2A (S)	1	EA	Modify Existing Traffic Signal (at 5th Ave)
63	86-3 (S)	45	EA	Traffic Loop Detectors (Type E)
64	86-3 (S)	14	EA	Traffic Loop Detectors (Type D)
65	86-26 (S)	1	LS	Solar Powered Beacon and Sign Systems
66	86-27 (S)	41	EA	Streetlights – Street
67	86-27 (S)	28	EA	Streetlights – Pedestrian
68	86-27 (S)	65	EA	Streetlight Pull Box
69	100 (S)	1	LS	Construction Staking
70	101	1	LS	Temporary Fence
71	103-1.3 (S)	1	LS	Holiday Lights
72	103-1.3	1	LS	Wifi Systems
73	103-3.1	1	LS	Closed Circuit Television (CCTV) Inspection of Sanitary Sewer Lines
74	103-3.3	28	EA	Remove and Replace Existing Sanitary Sewer Manhole
75	103-3.3	2	EA	Remove and Relocate Sanitary Sewer Manhole
76	103- 3.7	60	LF	Sanitary Sewer Lateral Repair

ENGINEER'S ESTIMATE (SCHEDULE A) – Continued on Next Page

ENGINEER'S ESTIMATE (SCHEDULE A) – Continued from Previous Page

Item No.	Section No.	Estimated Quantity	Unit of Measure	Item Description
77	105-3	1	LS	Trench Safety
78	106-2	6,155	LF	Pipe Replacement (Open Trench) - 8" PVC Pipeline
79	106-2	425	LF	Pipe Replacement (Open Trench) - 24" PVC Pipeline
80	106-3	181	EA	Reconnect Sanitary Sewer Lateral (Open-Trench Method)
81	108	132	EA	Utility Line Crossings
82	108-1	1	LS	San Francisco (Hetch Hetchy) Water Transmission Line Crossings
83	113 (S)	450	LF	Jack and Bore Crossing #1 (Middlefield Road): One 36", one 30" and one 24" Steel Casings (150 LF Each)
84	113 (S)	180	LF	Jack and Bore Crossing #2 (Redwood Junction): One 10" and one 18" Steel Casing (90 LF Each)
85	113 (S)	150	LF	Jack and Bore Crossing #3 (Sanitary Sewer): One 16" Steel Casing
86	114-1 (S)	1	LS	Irrigation System
87	114-2.3.7 (S)	61	EA	48" Boxed Trees
88	114-2.3.7 (S)	5	EA	36" Boxed Trees
89	114-2.3.7 (S)	820	EA	Canned Shrubs/Vines (1-Gallon)
90	114-2.3.7 (S)	144	EA	Canned Shrubs/Vines (5-Gallon)
91	114-3.2.1	18	EA	Benches
92	114-3.2.1	2	EA	Special Bulb-Out Seatwall
93	114-3.2.2	13	EA	Bike Rack
94	114-3.2.3	12	EA	Trash and Recycle Receptacle
95	114-3.2.4	66	EA	Tree Grate (48"x72")
96	114-3.2.5	300	SF	Special Bulb-Out Paving
97	114-4	1	LS	Tree Protection
98	115-2	3,000	SF	Bioretention Concrete Walls Reinforcing
99	115-3	1,590	LF	Bioretention Collection and Discharge Piping and Structures
100	115-4	300	CY	Bioretention Basin Fill Material

SCHEDULE B (JOINT TRENCH):

Item No.	Section No.	Estimated Quantity	Unit of Measure	Item Description
1	10	1	LS	Construction Waste Management
2	11	1	LS	Mobilization
3	11-3	1	LS	Water Pollution Control
4	12	1	LS	Maintaining Traffic
5	15-2	26,675	LF	Sawcut Asphalt Concrete and Portland Cement Concrete
6	103-1 (S)	<u>6</u>	EA	Electric Utility box - 4'6" x 8'6" x 6' #7-Box
7	103-1 (S)	8	EA	Electric Utility box - 54" x 102" x 72" #7TR Box
8	103-1 (S)	1	EA	Electric Utility box - 54" x 102" x 72" #7S Box
9	103-1 (S)	6	EA	Electric Utility box - 54" x 78" x 60" #6S Box
10	103-1 (S)	1	EA	Electric Utility box - 54" x 78" x 60" #6J Box
11	103-1 (S)	2	EA	Electric Utility box - 54" x 78" x 60" #6I Box
11A	103-1 (S)	1	EA	Electric Utility box – 36" x 60" x 30" #5 Box
11B	103-1 (S)	1	EA	Electric Utility box – 36" x 60" x 54" #5S Splice Box
12	103-1 (S)	<u>17</u>	EA	Electric Utility box - 24" x 36" x <u>36"</u> #3F Splice Box Full Traffic
13	103-1 (S)	<u>14</u>	EA	Electric Utility box - 24" x 36" x <u>26"</u> #3 Splice Box
14	103-1 (S)	4	EA	Electric Utility box - <u>24" x 36" x 26"</u> #2-Box
14A	103-1 (S)	1	EA	Electric Utility box – 17" x 36" x 30" #2F Box
14B	103-1 (S)	2	EA	Electric Utility box – 17" x 30" x 30" #2F Box
15	103-1 (S)	7	EA	Telephone Utility box - 48" x 78" x 48" T8-Box
16	103-1 (S)	7	EA	Telephone Utility box - 30" x 48" x 36" T4-Box
17	103-1 (S)	9	EA	Telephone Utility box - 17" x 30" x 24" T3-Box
18	103-1 (S)	13	EA	Fiber Utility box - 30" x 48" x 24" B-48 Box
19	103-1 (S)	21	EA	Fiber Utility box - 24" x 36" x 14" B-40 Box
20	103-1 (S)	33	EA	CATV Utility Box - 20" x 42" x 24" B-44 Box
21	103-1 (S)	2	EA	Telephone Utility box - 30" x 60" x 36" T2-Box
22	103-1 (S)	392	LF	Utility Trench Section D - 24x60
23	103-1 (S)	25	LF	Utility Trench Section D1 - 36x60
24	103-1 (S)	90	LF	Utility Trench Section D2 - 24x53
25	103-1 (S)	46	LF	Utility Trench Section D3 - 42x63
26	103-1 (S)	19	LF	Utility Trench Section D4 - 42x63
27	103-1 (S)	332	LF	Utility Trench Section D5 - 24x58
28	103-1 (S)	45	LF	Utility Trench Section D6 - 36x58

ENGINEER'S ESTIMATE (SCHEDULE B) – Continued on Next Page

ENGINEER'S ESTIMATE (SCHEDULE B) – Continued from Previous Page

Item No.	Section No.	Estimated Quantity	Unit of Measure	Item Description
29	103-1 (S)	30	LF	Utility Trench Section D7 - 36x64
30	103-1 (S)	22	LF	Utility Trench Section D8 - 42x62
31	103-1 (S)	17	LF	Utility Trench Section D9 - 36x65
32	103-1 (S)	133	LF	Utility Trench Section D10 - 18x56
33	103-1 (S)	15	LF	Utility Trench Section D11 - 36x65
33A	103-1 (S)	78	LF	Utility Trench Section D12 – 24x60
34	103-1 (S)	58	LF	Utility Trench Section D14 - 42x62
35	103-1 (S)	116	LF	Utility Trench Section D15 - 42x62
36	103-1 (S)	24	LF	Utility Trench Section D16 - 18x52
37	103-1 (S)	93	LF	Utility Trench Section D17 - 30x65
38	103-1 (S)	230	LF	Utility Trench Section D18 - 36x60
39	103-1 (S)	67	LF	Utility Trench Section D19 - 42x62
40	103-1 (S)	95	LF	Utility Trench Section D20 - 24x60
41	103-1 (S)	35	LF	Utility Trench Section D21 - 30x58
42	103-1 (S)	16	LF	Utility Trench Section D22 - 30x60
43	103-1 (S)	67	LF	Utility Trench Section D23 - 30x63
44	103-1 (S)	431	LF	Utility Trench Section D24 - 24x56
45	103-1 (S)	198	LF	Utility Trench Section D25 - 36x64
46	103-1 (S)	14	LF	Utility Trench Section D26 - 30x60
47	103-1 (S)	32	LF	Utility Trench Section D28 - 30x58
48	103-1 (S)	63	LF	Utility Trench Section D29 - 42x63
49	103-1 (S)	32	LF	Utility Trench Section D30 - 30x58
50	103-1 (S)	83	LF	Utility Trench Section D31 - 24x55
51	103-1 (S)	135	LF	Utility Trench Section D32 - 30x60
52	103-1 (S)	67	LF	Utility Trench Section D33 - 30x60
53	103-1 (S)	72	LF	Utility Trench Section D34 - 30x54
54	103-1 (S)	203	LF	Utility Trench Section D35 - 24x58
55	103-1 (S)	40	LF	Utility Trench Section D36 - 36x70
56	103-1 (S)	60	LF	Utility Trench Section D37 - 36x65
57	103-1 (S)	21	LF	Utility Trench Section D38 - 24x58
58	103-1 (S)	36	LF	Utility Trench Section D39 - 18x58
59	103-1 (S)	33	LF	Utility Trench Section D40 - 24x53
60	103-1 (S)	10	LF	Utility Trench Section D41 - 36x70
61	103-1 (S)	55	LF	Utility Trench Section D42 - 36x65
62	103-1 (S)	42	LF	Utility Trench Section D43 - 36x64

ENGINEER'S ESTIMATE (SCHEDULE B) – Continued on Next Page

ENGINEER'S ESTIMATE (SCHEDULE B) – Continued from Previous Page

Item No.	Section No.	Estimated Quantity	Unit of Measure	Item Description
63	103-1 (S)	66	LF	Utility Trench Section D44 - 36x65
64	103-1 (S)	23	LF	Utility Trench Section D45 - 42x55
65	103-1 (S)	17	LF	Utility Trench Section D46 - 30x65
66	103-1 (S)	25	LF	Utility Trench Section D48 - 30x58
67	103-1 (S)	36	LF	Utility Trench Section D49 - 24x58
68	103-1 (S)	18	LF	Utility Trench Section D50 - 18x58
69	103-1 (S)	60	LF	Utility Trench Section D51 - 42x63
70	103-1 (S)	31	LF	Utility Trench Section D52 - 42x63
71	103-1 (S)	31	LF	Utility Trench Section D53 - 42x54
72	103-1 (S)	28	LF	Utility Trench Section D54 - 24x62
73	103-1 (S)	46	LF	Utility Trench Section D55 - 30x53
74	103-1 (S)	19	LF	Utility Trench Section D56 - 30x55
75	103-1 (S)	17	LF	Utility Trench Section D57 - 30x61
76	103-1 (S)	39	LF	Utility Trench Section D58 - 36x65
77	103-1 (S)	74	LF	Utility Trench Section D59 - 18x56
78	103-1 (S)	11	LF	Utility Trench Section D60 - 30x64
79	103-1 (S)	17	LF	Utility Trench Section D61 - 36x60
79A	103-1 (S)	57	LF	Utility Trench Section D62 – 36x64
80	103-1 (S)	7	LF	Utility Trench Section D63 - 24x58
81	103-1 (S)	39	LF	Utility Trench Section D64 - 42x54
82	103-1 (S)	7	LF	Utility Trench Section D65 - 24x57
83	103-1 (S)	32	LF	Utility Trench Section D66 - 30x56
84	103-1 (S)	62	LF	Utility Trench Section F - 24x59
85	103-1 (S)	32	LF	Utility Trench Section D67 - 42x63
86	103-1 (S)	38	LF	Utility Trench Section D68 - 30x60
87	103-1 (S)	45	LF	Utility Trench Section D70 42x48
87A	103-1 (S)	38	LF	Utility Trench Section D71 30x52
88	103-1 (S)	57	LF	Utility Trench Section F1 - 42x54
89	103-1 (S)	11	LF	Utility Trench Section F2 - 42x54
90	103-1 (S)	25	LF	Utility Trench Section F5 - 30x59
91	103-1 (S)	51	LF	Utility Trench Section F6 - 18x52
92	103-1 (S)	58	LF	Utility Trench Section F7 - 12x52
92A	103-1 (S)	20	LF	Utility Trench Section F8 - 30x46
92B	103-1 (S)	10	LF	Utility Trench Section F9 - 18x46
92C	103-1 (S)	754	LF	Utility Trench Section F10 – 18x46

ENGINEER'S ESTIMATE (SCHEDULE B) – Continued on Next Page

ENGINEER'S ESTIMATE (SCHEDULE B) – Continued from Previous Page

Item No.	Section No.	Estimated Quantity	Unit of Measure	Item Description
93	103-1 (S)	181	LF	Utility Trench Section G - 36x59
94	103-1 (S)	28	LF	Utility Trench Section G1 - 24x50
95	103-1 (S)	45	LF	Utility Trench Section G2 - 24x56
96	103-1 (S)	59	LF	Utility Trench Section G3 - 30x58
97	103-1 (S)	30	LF	Utility Trench Section G4 - 12x50
98	103-1 (S)	56	LF	Utility Trench Section G7 - 30x60
99	103-1 (S)	196	LF	Utility Trench Section H - 12x43
100	103-1 (S)	106	LF	Utility Trench Section H1 - 18x43
101	103-1 (S)	49	LF	Utility Trench Section H2 - 30x43
102	103-1 (S)	113	LF	Utility Trench Section H3 - 18x41
103	103-1 (S)	167	LF	Utility Trench Section H5 - 30x43
104	103-1 (S)	363	LF	Utility Trench Section H6 - 12x41
105	103-1 (S)	50	LF	Utility Trench Section H7 – 30x41
106	103-1 (S)	41	LF	Utility Trench Section H8 – 24x49
107	103-1 (S)	67	LF	Utility Trench Section H9 – 18x48
108	103-1 (S)	111	LF	Utility Trench Section H10 – 18x43
109	103-1 (S)	598	LF	Utility Trench Section H11 – 18x37
110	103-1 (S)	94	LF	Utility Trench Section H12 – 30x53
111	103-1 (S)	17	LF	Utility Trench Section H13 – 72x47
112	103-1 (S)	31	LF	Utility Trench Section H14 – 42x42
113	103-1 (S)	129	LF	Utility Trench Section H15 – 24x53
114	103-1 (S)	47	LF	Utility Trench Section H16 – 30x53
115	103-1 (S)	16	LF	Utility Trench Section H17 – 24x51
115A	103-1 (S)	69	LF	Utility Trench Section H18 – 42x52
116	103-1 (S)	39	LF	Utility Trench Section H19 – 30x53
117	103-1 (S)	20	LF	Utility Trench Section H20 – 18x48
117A	103-1 (S)	140	LF	Utility Trench Section L-18x41
118	103-1 (S)	201	LF	Utility Trench Section L1 – 18x36
119	103-1 (S)	136	LF	Utility Trench Section L2 – 18x41
120	103-1 (S)	69	LF	Utility Trench Section L3 – 12x50
121	103-1 (S)	184	LF	Utility Trench Section L5 – 12x36
122	103-1 (S)	246	LF	Utility Trench Section L6 – 18x41
123	103-1 (S)	137	LF	Utility Trench Section L7 – 18x35
124	103-1 (S)	38	LF	Utility Trench Section L8 – 18x29
125	103-1 (S)	176	LF	Utility Trench Section L9 - 12x33

ENGINEER'S ESTIMATE (SCHEDULE B) – Continued on Next Page

ENGINEER'S ESTIMATE (SCHEDULE B) – Continued from Previous Page

Item No.	Section No.	Estimated Quantity	Unit of Measure	Item Description
126	103-1 (S)	54	LF	Utility Trench Section L10 - 18x35
127	103-1 (S)	46	LF	Utility Trench Section L11 - 24x39
128	103-1 (S)	173	LF	Utility Trench Section L12 - 18x51
129	103-1 (S)	73	LF	Utility Trench Section L13 - 12x38
130	103-1 (S)	18	LF	Utility Trench Section L14 - 18x39
131	103-1 (S)	164	LF	Utility Trench Section L15 - 12x37
131A	103-1(S)	74	LF	Utility Trench Section L16 – 18x36
131B	103-1(S)	9	LF	Utility Trench Section L19 – 18x36
132	103-1 (S)	<u>771</u>	LF	Utility Trench Section P - 12x54
133	103-1 (S)	13	LF	Utility Trench Section P1 - 18x54
134	103-1 (S)	61	LF	Utility Trench Section P2 - 12x56
135	103-1 (S)	82	LF	Utility Trench Section P3 - 24x52
136	103-1 (S)	83	LF	Utility Trench Section P4 - 24x58
137	103-1 (S)	139	LF	Utility Trench Section P5 - 12x50
138	103-1 (S)	40	LF	Utility Trench Section P6 - 12x55
139	103-1 (S)	39	LF	Utility Trench Section P7 - 18x51
140	103-1 (S)	17	LF	Utility Trench Section P8 - 18x53
141	103-1 (S)	22	LF	Utility Trench Section P9 - 18x56
142	103-1 (S)	25	LF	Utility Trench Section P10 - 18x49
143	103-1 (S)	81	LF	Utility Trench Section P11 - 18x58
144	103-1 (S)	102	LF	Utility Trench Section P12 - 12x51
145	103-1 (S)	82	LF	Utility Trench Section P14 - 18x52
146	103-1 (S)	338	LF	Utility Trench Section P15 - 12x52
147	103-1 (S)	40	LF	Utility Trench Section P17 - 18x53
148	103-1 (S)	381	LF	Utility Trench Section P18 - 12x54
149	103-1 (S)	50	LF	Utility Trench Section P19 - 18x52
150	103-1 (S)	83	LF	Utility Trench Section P20 - 18x57
151	103-1 (S)	<u>69</u>	LF	Utility Trench Section P21 - 12x52
152	103-1 (S)	55	LF	Utility Trench Section P22 - 18x53
153	103-1 (S)	72	LF	Utility Trench Section P23 - 12x52
154	103-1 (S)	12	LF	Utility Trench Section P24 - 12x30
154A	103-1 (S)	56	LF	Utility Trench Section P25 – 12x50
155	103-1 (S)	12	LF	Utility Trench Section R - 24x49
156	103-1 (S)	34	LF	Utility Trench Section R1 - 18x50
156A	103-1 (S)	36	LF	Utility Trench Section R2 – 18x44

ENGINEER'S ESTIMATE (SCHEDULE B) – Continued on Next Page

ENGINEER'S ESTIMATE (SCHEDULE B) – Continued from Previous Page

Item No.	Section No.	Estimated Quantity	Unit of Measure	Item Description
<u>156B</u>	<u>103-1 (S)</u>	<u>55</u>	<u>LF</u>	<u>Utility Trench Section R3 – 18x42</u>
157	103-1 (S)	26	LF	Utility Trench Section S - 12x49
158	103-1 (S)	45	LF	Utility Trench Section S1 - 12x49
<u>158A</u>	<u>103-1 (S)</u>	<u>74</u>	<u>LF</u>	<u>Utility Trench Section S2 – 18x50</u>
159	103-1 (S)	208	LF	Utility Trench Section U - 18x41
160	103-1 (S)	130	LF	Utility Trench Section U1 - 12x50
161	103-1 (S)	48	LF	Utility Trench Section U2 - 24x52
162	103-1 (S)	178	LF	Utility Trench Section U3 - 24x58
163	103-1 (S)	32	LF	Utility Trench Section U4 - 12x50
164	103-1 (S)	36	LF	Utility Trench Section U5 - 18x50
165	103-1 (S)	59	LF	Utility Trench Section U6 - 18x51
166	103-1 (S)	94	LF	Utility Trench Section U7 - 18x53
<u>166A</u>	<u>103-1 (S)</u>	<u>28</u>	<u>LF</u>	<u>Utility Trench Section U8 – 12x35</u>
<u>166B</u>	<u>103-1 (S)</u>	<u>19</u>	<u>LF</u>	<u>Utility Trench Section U9 – 12x41</u>
167	103-1 (S)	<u>187</u>	LF	Utility Trench Section V - 18x56
168	103-1 (S)	72	LF	Utility Trench Section V1 - 18x36
169	103-1 (S)	32	LF	Utility Trench Section V2 - 18x58
170	103-1 (S)	55	LF	Utility Trench Section V3 - 12x51
<u>170A</u>	<u>103-1 (S)</u>	<u>21</u>	<u>LF</u>	<u>Utility Trench Section V4 - 18x36</u>
171	103-1 (S)	1,380	LF	Utility Trench Section W - 6x35
172	103-1 (S)	920	LF	Utility Trench Section W1 - 12x35
173	103-1 (S)	38	LF	Utility Trench Section W2 - 18x35
174	103-1 (S)	37	LF	Utility Trench Section W3 - 18x49
175	103-1 (S)	25	LF	Utility Trench Section W4 - 18x41
176	103-1 (S)	144	LF	Utility Trench Section W5 - 12x51
177	103-1 (S)	24	LF	Utility Trench Section W6 - 12x34
178	103-1 (S)	6	LF	Utility Trench Section W7 - 12x33
179	103-1 (S)	5	LF	Utility Trench Section W8 - 12x36
180	103-1 (S)	<u>49</u>	LF	Utility Trench Section W9 - 24x34
181	103-1 (S)	10	LF	Utility Trench Section W10 - 18x35
182	103-1 (S)	333	LF	Utility Trench Section W11 - 18x39
183	103-1 (S)	14	LF	Utility Trench Section W12 - 12x35
184	103-1 (S)	20	LF	Utility Trench Section W13 - 12x35

ENGINEER'S ESTIMATE (SCHEDULE B) – Continued on Next Page

ENGINEER'S ESTIMATE (SCHEDULE B) – Continued from Previous Page

Item No.	Section No.	Estimated Quantity	Unit of Measure	Item Description
185	103-1 (S)	<u>150</u>	LF	Jack and Bore Utility Crossing - Trench Section H16 - 36" DIA Casing
186	103-1 (S)	<u>150</u>	LF	Jack and Bore Utility Crossing - Trench Section V3 - 30" Casing
187	103-1 (S)	<u>150</u>	LF	Jack and Bore Utility Crossing - Trench Section W - 24" DIA Casing
188	103-1 (S)	90	LF	Jack and Bore Utility Crossing - Trench Section U7 - 18" DIA Casing
189	103-1 (S)	90	LF	Jack and Bore Utility Crossing - Trench Section V - 12" DIA Casing
<u>189</u>	103-1 (S)	90	LF	Jack and Bore Utility Crossing - Trench Section H6 - 10" DIA Casing
191	103-1 (S)	2	LS	Jack and Bore Preparation - Pits - Jacking Pit
192	103-1 (S)	2	LS	Jack and Bore Preparation - Pits - Receiving Pit
193	103-1 (S)	2,667	CY	Jack and Bore Preparation - Backfill and Compaction of Pits - Middlefield Road
194	103-1 (S)	160	LF	Jack and Bore Preparation - Dewatering - Middlefield Road
195	103-1 (S)	160	LF	Jack and Bore Preparation - Pavement Restoration - Middlefield Road
196	103-1 (S)	160	LF	Jack and Bore Preparation - Shoring - Middlefield Road
197	103-1 (S)	1,500	CY	Jack and Bore Preparation - Backfill and Compaction of Pits - UP R/W
198	103-1 (S)	90	LF	Jack and Bore Preparation - Dewatering - UP R/w
199	103-1 (S)	90	LF	Jack and Bore Preparation - Shoring - UP RW
<u>190</u>	<u>113 (S)</u>	<u>450</u>	<u>LF</u>	<u>Jack and Bore Crossing #1 (Middlefield Road): One 36", one 30" and one 24" Steel Casings (150 LF Each)</u>
<u>191</u>	<u>113 (S)</u>	<u>180</u>	<u>LF</u>	<u>Jack and Bore Crossing #2 (Redwood Junction): One 10" and one 18" Steel Casing (90 LF Each)</u>
<u>192</u>	105-3	1	LS	Trench Safety

Engineer's Estimate of SCHEDULE A Costs: \$ 22,426,874

Engineer's Estimate of SCHEDULE B Costs: \$ 5,505,886

TOTAL BASE BID (SCHEDULE A+B): \$ 28,932,760

NOTES:

- (1) (F) Final Pay Quantities – See Section 9-1.015, “Final Pay Items,” of the Standard Specifications.
- (2) (S) Specialty Items – As defined in Section 8-1.01, “Subcontracting,” of the Standard Specifications.
- (3) Gaps in Schedule A and Schedule B section numbering, above, indicate the Section is blank or does not apply.

The foregoing quantities are approximate only, being given as a basis for the comparison of bids, and the County of San Mateo does not, expressly or by implication, agree that the actual amount of work will correspond herewith, but reserves the right to increase or decrease the amount of any class or portion of the work, or to omit any portion of the work, as may be deemed necessary or expedient by the Engineer.

Payment to the Contractor for materials furnished and work completed shall be made by the County in accordance with Section 9 of the "Special Provisions" portion of these Contract Documents. Pursuant to Section 22300 of the Public Contract Code, Contractor may, upon his request and at Contractor's expense, substitute equivalent securities for any moneys retained from such payment for the fulfillment of the Contract.

When applicable, both Contractor and Subcontractor hereby agrees to pay not less than prevailing rates of wages and be responsible for compliance with all the provisions of the California Labor Code, Article 2-Wages, Chapter 1, Part 7, Division 2, Section 1770 et seq and Section 1810 et seq. A copy of the prevailing wage scale established by the Department of Industrial Relations is on file in the office of the Director of Public Works, and available at www.dir.ca.gov/DLSR or by phone at 415-703-4774. California Labor Code Section 1776(a) requires each contractor and subcontractor keep accurate payroll records of trades workers on all public works projects and to submit copies of certified payroll records upon request.

Additionally, pursuant to State Senate Bill SB 854 (Stat. 2014, chapter 28), effective January 1, 2015:

- A. No contractor or subcontractor may be listed on a bid proposal for a public works project (submitted on or after March 1, 2015) unless registered with the Department of Industrial Relations pursuant to Labor Code Section 1725.5 [with limited exceptions from this requirement for bid purposes only under Labor Code Section 1771.1(a)].**
- B. No contractor or subcontractor may be awarded a contract for public work on a public works project (awarded on or after April 1, 2015) unless registered with the Department of Industrial Relations pursuant to Labor Code Section 1725.5.**
- C. This project is subject to compliance monitoring and enforcement by the Department of Industrial Relations.**

Wage rates for overtime shall be paid at not less than one and one-half (1½) times the above rates. Wage rates for Sundays and holidays shall be paid at not less than two times the above rates.

The holidays upon which such rates shall be paid shall be all holidays recognized in the collective bargaining agreement applicable to the particular craft, classification, or type of worker employed on the Project.

It is the policy of the County that Contractors on public projects employ their workers and craftsmen from the local labor market whenever possible. "Local Labor Market" is defined as the labor market within the geographical confines of the County of San Mateo, State of California. Consistent with this policy, the Contractor is requested to employ craftsmen and other workers from the local labor market whenever possible to do so.

Each bidder shall submit with the bid, Certificates of Compliance and Intent on a form provided in the "Proposal" section of these Contract Documents, a certificate that bidder is in compliance with the provisions of the Equal Employment Opportunity Requirement of Executive Order 11246, Title VII of the Civil Rights Act of 1964, the California Fair Employment and Housing Act and any other federal, State and local laws and regulations relating to equal employment opportunity. With the execution of said certificates, bidder also agrees that bidder will maintain or develop and implement, during the course of the work concerned, a program of hiring and employment, conducted without regard to race, religion, color, national origin, ancestry, sexual orientation, or sex of the applicants. With this certification, bidder shall submit any and all information that may be required by the County in connection with the particular project.

Each bidder is hereby notified of the Section 9204 and Section 20104 et seq. of the Public Contract Code as those Sections (attached hereto as Appendix E) relate to resolution of construction claims, and to Section 3186 of the Civil Code, as amended January 1, 1999 with regard to stop notices and public entity's rights to retain monies in order to provide for that entity's reasonable cost of litigation. The bidder is further notified that all provisions of Section 9204 and Section 20104 et seq. of the Public Contract Code and Section 3186 of the Civil Code, as outlined above shall be considered as incorporated into and become an integral part of these specifications.

Questions relating to equal employment should be directed to the San Mateo County Department of Public Works, Equal Employment Opportunity Program, 555 County Center, 5th Floor, Redwood City, CA 94063-1665, telephone (650) 363-4100.

Plans and Specifications and forms of Proposal and Contract may be seen and obtained at the office of the Director of Public Works, 555 County Center, Redwood City, California, 94063-1665. Plans and specifications may be obtained for a:

NON-REFUNDABLE FEE OF \$100 PER SET

Additional technical questions should be directed to the office of the Director of Public Works, 555 County Center, Redwood City, California, 94063-1665, telephone (650) 363-4100.

The Contractor shall possess either a Class A License or a combination of Class C licenses that are applicable for the majority of the work at the time this contract is awarded. No Contract will be awarded to a Bidder who is not licensed as required by laws of the State of California.

The Contractor is advised that a virtual pre-bid conference will occur on November 12, 2020 at 10:00AM, and shall take place virtually on Microsoft Teams, toll free number: 1-877-286-5733 and conference ID number: 700 637 16#. Subsequently, Contractor shall email mrman@smcgov.org to be invited to the virtual pre-bid conference via an email appointment.

The virtual pre-bid conference is not mandatory; however, the Contractor is advised that inspection of the site prior to the bid submittal and acknowledgement of said inspection will be required for the acceptance of the bid.

The Contractor shall sign and date the Acknowledgement of Site Visit form provided on page 19 of the Proposal Section and submit with the bid. Failure to complete this form shall be grounds for rejection of the bid.

The County of San Mateo reserves the right to reject any or all bids and/or waive any informalities or irregularities in any bid received.

Bidders may not withdraw their bid for a period of **FORTY-FIVE (45) DAYS** after the date set from the opening thereof.

BY ORDER OF THE
BOARD OF SUPERVISORS
COUNTY OF SAN MATEO

DATE: October 20, 2020

**Michael Callagy, County Manager/
Clerk of the Board of Supervisors**

The following approximate quantities are provided to assist the Contractor in developing pricing. The County is not responsible for the quantities and are only provided as a reference, to be verified by Contractor.

Remove concrete curb & gutter:	7,750 SF
Remove concrete curb:	25 SF
Remove concrete sidewalks:	<u>25,220 SF</u>
Remove concrete driveway openings:	5,395 SF
Remove concrete sidewalk access ramps:	230 SF
Remove concrete valley gutters:	290 SF
Remove concrete medians:	1,655 SF

The Contractor’s attention is directed to Section 51-3, “Class 3 Concrete,” of these Special Provisions. The Contractor is advised that the progression and sequence of the various phases of the concrete removal and replacement work shall be approved, in writing, by the Engineer. Work within a particular location or area shall not commence without written approval of the Engineer.

Work within the overall limits of removal and replacement shall be done on one side of the street at any given time or by staggering the blocks so that pedestrian travel is not impeded or interrupted unless said work sequence is modified with written approval from the Engineer. No new demolition shall begin on Fridays. There shall be no instances where sidewalks on both sides (or all four corners at an intersection) of the street are demolished at the same time leaving no room for the pedestrian traffic to walk through the area.

For each Phase of construction, Contractor to provide pedestrian customers, customer vehicles, and delivery vehicles access to businesses when the area is closed to through traffic. In general, Contractor shall immediately provide access to all entrances after the removal of adjacent concrete improvements (during demolition), prior to and after placement of formwork and after placement of concrete. Contractor shall maintain access facilities to all affected entrances at Contractor expense until Engineer has approved

jacked pipe. Compaction and the surface restored in accordance with Section 39-3, "Pavement Repair."

113-13 MEASUREMENT AND PAYMENT

The length of Jacking Pipe to be paid for will be the horizontal length as shown on the Plans, unless modified by the Engineer due to unforeseen field conditions. The price paid per linear foot for the items "Jack and Bore Crossing #1 (Middlefield Road)," "Jack and Bore Crossing #2 (Redwood Junction)," and "Jack and Bore Crossing #3 (Sanitary Sewer)," shall include full compensation for furnishing all labor, materials, tools and equipment and doing all the work involved in furnishing and installing the Jacking Pipe in place, including but not limited to, excavating, constructing and backfilling jacking and receiving pits, **(including shoring of excavations, dewatering, temporary paving, use of steel plates and k-rail and traffic control/flaggers to accommodate traffic along Middlefield Road and onto Redwood Junction over and /or around jacking and receiving pits as-needed)**, boring and tunneling, constructing metal shields (jacking heads), and grouting of voids or cavities, furnishing and installing conductor pipe, spacers and pipe bands if used, conducting hydrostatic tests, where such tests are to be included in the price of the pipe, and obtaining all necessary permits from the California Department of Industrial Relations, Division of Occupational Safety and Health (Cal/OSHA). Pipe placed within the jacking and receiving pits to connect the Jacked Pipe to the incoming and outgoing pipe shall be measured and paid for at the bid price for the type of pipe to be connected to.

END OF SECTION

PROPOSAL TO THE COUNTY OF SAN MATEO

MIDDLEFIELD ROAD IMPROVEMENT PROJECT

IN THE NORTH FAIR OAKS AREA

IN SAN MATEO COUNTY

A BID IS REQUIRED FOR THE ENTIRE WORK DESCRIBED HEREIN FOR SCHEDULE A AND SCHEDULE B. THE AWARD OF CONTRACT, IF AWARDED, WILL BE MADE ON THE BASIS OF THE LOWEST SUM TOTAL OF BOTH SCHEDULE A AND SCHEDULE B.

SCHEDULE A (EXCLUDES JOINT TRENCH):

Item No.	Section No.	Estimated Quantity	Unit of Measure	Item Description	Item Price (In Figures)	Total (In Figures)
1	10	1	LS	Construction Waste Management	\$	\$
2	11	1	LS	Mobilization	\$	\$
3	11-3	1	LS	Water Pollution Control	\$	\$
4	12	1	LS	Maintaining Traffic	\$	\$
5	12-2	1	LS	Temporary Pavement Delineation	\$	\$
6	15-2	14,810	LF	Sawcut Asphalt Concrete and Portland Cement Concrete	\$	\$
7A	15-3	6	EA	Adjust Storm Drain Manholes to Grade	\$	\$
7B	15-3	19	EA	Adjust Telecom Manholes to Grade	\$	\$
8A	15-4	1	EA	Reconstruct Storm Drain Manholes to Grade	\$	\$
8B	15-4	1	EA	Reconstruct Telecom Manhole to Grade	\$	\$

PROPOSAL (SCHEDULE A) – Continued on Next Page

PROPOSAL (SCHEDULE A) – Continued from Previous Page

Item No.	Section No.	Estimated Quantity	Unit of Measure	Item Description	Item Price (In Figures)	Total (In Figures)
9	15-5	39	EA	Adjust Water Valve Box to Grade (Cal Water)	\$	\$
10	15-6	48	EA	Adjust Water Meter Box to Grade (Cal Water)	\$	\$
11	15-7	15	EA	Adjust Monument Box Cover to Grade	\$	\$
12	15-8	4,000	SY	Remove Portland Cement Concrete Pavement	\$	\$
13	15-9	50	EA	Pothole and Protect Existing Utilities	\$	\$
14	15-10	2	EA	Temporary Relocation and Reinstallation of United States Postal Service Mailboxes	\$	\$
15	15-11	2	EA	Remove Telephones	\$	\$
16	15-12	110	EA	Adjust Sanitary Sewer Cleanout Box to Grade	\$	\$
17	15-13	1	EA	Adjust PG&E Utility Vault to Grade	\$	\$
18	15-14	1	LS	Relocation Of Health Clinic Existing Fire Hydrant, Fire Department Connection And Sign And Regrading And Replanting Of Bioretention Area	\$	\$
19	15-15	5	EA	Adjust Existing Gas Valve to Grade	\$	\$
20	15-16	16	EA	Adjust Pull Boxes	\$	\$
21	15-17	1	EA	Relocate Pull Boxes	\$	\$
22	15-18	1	EA	Protect Bollard	\$	\$

PROPOSAL (SCHEDULE A) – Continued on Next Page

PROPOSAL (SCHEDULE A) – Continued from Previous Page

Item No.	Section No.	Estimated Quantity	Unit of Measure	Item Description	Item Price (In Figures)	Total (In Figures)
23	15-19	1	EA	Adjust Existing Monitoring Well to Grade	\$	\$
24	15-20	4	EA	Remove Existing Pedestrian Signals	\$	\$
25	15-21	1	LS	Remove Concrete Curbs, Gutters, Sidewalks, Driveway Openings, Sidewalk Access Ramps, Valley Gutters and Medians	\$	\$
26	15-22	<u>21,790</u>	SY	Remove Asphalt Concrete Paving, Pavement Fabric, Aggregate Base	\$	\$
27	16	1	LS	Clearing and Grubbing	\$	\$
28	16-1	1	EA	Remove Trees	\$	\$
29	17	1	LS	Develop and Apply Water	\$	\$
30	19-1	<u>10,066</u>	CY	Roadway Excavation	\$	\$
31	20	1	LS	Erosion and Sediment Control	\$	\$
32	25	60	CY	Aggregate Subbase (Class 4)	\$	\$
33	26	<u>4,404</u>	CY	<u>Aggregate Base (Class 2)</u>	\$	\$
34	36	34	EA	Drainage Inlet Marker	\$	\$
35	37-2	1	EA	<u>Remove and</u> Relocate Existing Drainage Inlet	\$	\$
36	37-2	2	EA	Install New Drainage Inlet	\$	\$
37	37-3	13	EA	Clean and Inspect Existing Drainage Inlet	\$	\$

PROPOSAL (SCHEDULE A) – Continued on Next Page

PROPOSAL (SCHEDULE A) – Continued from Previous Page

Item No.	Section No.	Estimated Quantity	Unit of Measure	Item Description	Item Price (In Figures)	Total (In Figures)
38	39-1	<u>8,102</u>	TON	Asphalt Concrete (Type B, 1/2" Maximum, Medium grading)	\$	\$
39	39-3	114	SY	Place Asphalt Concrete (Miscellaneous Areas)	\$	\$
40	39-4	<u>11,204</u>	SY	Plane Asphalt Concrete Pavement (Full Width)	\$	\$
41	40	3,000	SF	Portland Cement Concrete Pavement (Bus Pads)	\$	\$
42	51-2	<u>141</u>	CY	Class 2 Concrete (Minor Structures)	\$	\$
43	51-3	<u>886</u>	CY	Class 3 Concrete	\$	\$
44	51-4	30	EA	Sidewalk Access Ramps (Case A)	\$	\$
45	51-4	1	EA	Sidewalk Access Ramps (Case B with Retaining Curb)	\$	\$
46	51-4	2	EA	Sidewalk Access Ramps (Case C with Retaining Curb)	\$	\$
47	51-4	6	EA	Sidewalk Access Ramps (Case C without Retaining Curb)	\$	\$
48	51-4	2	EA	Sidewalk Access Ramps (Case F)	\$	\$
49	51-6 (S)	400	LF	Red Curb Painting at No Parking Zones	\$	\$
50	56-1	40	EA	Install New Roadside Signs	\$	\$
51	56-2	75	EA	Remove and Reset Existing Roadside Signs	\$	\$
52	68-3	160	LF	PVC Underdrains	\$	\$

PROPOSAL (SCHEDULE A) – Continued on Next Page

PROPOSAL (SCHEDULE A) – Continued from Previous Page

Item No.	Section No.	Estimated Quantity	Unit of Measure	Item Description	Item Price (In Figures)	Total (In Figures)
53	68-5	600	LF	Sidewalk Underdrains (Ductile Iron)	\$	\$
54	75 (F)	2,850	LBS	Miscellaneous Iron and Steel	\$	\$
55	81 (S)	14	EA	Survey Monument	\$	\$
56	84-3 (S)	14,000	SF	Thermoplastic Pavement Marking (Crosswalks and Legends)	\$	\$
57	84-3 (S)	22,000	LF	Thermoplastic Striping (by color)	\$	\$
58	85 (S)	81	EA	Pavement Markers, Type D (Two-way, Yellow, Retroreflective)	\$	\$
59	85 (S)	54	EA	Pavement Markers, Type G (Two-way, Yellow, Retroreflective)	\$	\$
60	85 (S)	8	EA	Pavement Markers, Hydrant Marker (Blue Reflective)	\$	\$
61	86-2 (S)	15	EA	Install New Traffic Signal	\$	\$
62	86-2A (S)	1	EA	Modify Existing Traffic Signal (at 5th Ave)	\$	\$
63	86-3 (S)	45	EA	Traffic Loop Detectors (Type E)	\$	\$
64	86-3 (S)	14	EA	Traffic Loop Detectors (Type D)	\$	\$
65	86-26 (S)	1	LS	Solar Powered Beacon and Sign Systems	\$	\$
66	86-27 (S)	41	EA	Streetlights – Street	\$	\$
67	86-27 (S)	28	EA	Streetlights – Pedestrian	\$	\$
68	86-27 (S)	65	EA	Streetlight Pull Box	\$	\$

PROPOSAL (SCHEDULE A) – Continued on Next Page

PROPOSAL (SCHEDULE A) – Continued from Previous Page

Item No.	Section No.	Estimated Quantity	Unit of Measure	Item Description	Item Price (In Figures)	Total (In Figures)
69	100 (S)	1	LS	Construction Staking	\$	\$
70	101	1	LS	Temporary Fence	\$	\$
71	103-1.3 (S)	1	LS	Holiday Lights	\$	\$
72	103-1.3	1	LS	Wifi Systems	\$	\$
73	103-3.1	1	LS	Closed Circuit Television (CCTV) Inspection of Sanitary Sewer Lines	\$	\$
74	103-3.3	28	EA	Remove and Replace Existing Sanitary Sewer Manhole	\$	\$
75	103-3.3	2	EA	Remove and Relocate Sanitary Sewer Manhole	\$	\$
76	103-3.7	60	LF	<u>Sanitary Sewer Lateral Repair</u>	\$	\$
77	105-3	1	LS	Trench Safety	\$	\$
78	106-2	6,155	LF	Pipe Replacement (Open Trench) - 8" PVC Pipeline	\$	\$
79	106-2	425	LF	Pipe Replacement (Open Trench) - 24" PVC Pipeline	\$	\$
80	106-3	181	EA	Reconnect Sanitary Sewer Lateral (Open-Trench Method)	\$	\$
81	108	132	EA	Utility Line Crossings	\$	\$
82	108-1	1	LS	San Francisco (Hetch Hetchy) Water Transmission Line Crossings	\$	\$
83	113 (S)	450	LF	<u>Jack and Bore Crossing #1 (Middlefield Road): One 36", one 30" and one 24" Steel Casings (150 LF Each)</u>	\$	\$

PROPOSAL (SCHEDULE A) – Continued on Next Page

PROPOSAL (SCHEDULE A) – Continued from Previous Page

Item No.	Section No.	Estimated Quantity	Unit of Measure	Item Description	Item Price (In Figures)	Total (In Figures)
84	113 (S)	180	LF	Jack and Bore Crossing #2 (Redwood Junction): One 10" and one 18" Steel Casing (90 LF Each)	\$	\$
85	113 (S)	150	LF	Jack and Bore Crossing #3 (Sanitary Sewer): One 16" Steel Casing	\$	\$
86	114-1 (S)	1	LS	Irrigation System	\$	\$
87	114-2.3.7 (S)	61	EA	48" Boxed Trees	\$	\$
88	114-2.3.7 (S)	5	EA	36" Boxed Trees	\$	\$
89	114-2.3.7 (S)	820	EA	Canned Shrubs/Vines (1-Gallon)	\$	\$
90	114-2.3.7 (S)	144	EA	Canned Shrubs/Vines (5-Gallon)	\$	\$
91	114-3.2.1	18	EA	Benches	\$	\$
92	114-3.2.1	2	EA	Special Bulb-Out Seatwall	\$	\$
93	114-3.2.2	13	EA	Bike Rack	\$	\$
94	114-3.2.3	12	EA	Trash and Recycle Receptacle	\$	\$
95	114-3.2.4	66	EA	Tree Grate (48"x72")	\$	\$
96	114-3.2.5	300	SF	Special Bulb-Out Paving	\$	\$
97	114-4	1	LS	Tree Protection	\$	\$
98	115-2	3,000	SF	Bioretention Concrete Walls Reinforcing	\$	\$
99	115-3	1,590	LF	Bioretention Collection and Discharge Piping and Structures	\$	\$
100	115-4	300	CY	Bioretention Basin Fill Material	\$	\$
SCHEDULE A SUB-TOTAL						\$

NOTES:

- (1) (F) Final Pay Quantities – See Section 9-1.015, “Final Pay Items,” of the Standard Specifications.
- (2) (S) Specialty Items – As defined in Section 8-1.01, “Subcontracting,” of the Standard Specifications.
- (3) Gaps in section numbering, above, indicate the Section is blank or does not apply.

SCHEDULE B (JOINT TRENCH):

Item No.	Section No.	Estimated Quantity	Unit of Measure	Item Description	Item Price (In Figures)	Total (In Figures)
1	10	1	LS	Construction Waste Management	\$	\$
2	11	1	LS	Mobilization	\$	\$
3	11-3	1	LS	Water Pollution Control	\$	\$
4	12	1	LS	Maintaining Traffic	\$	\$
5	15-2	26,675	LF	Sawcut Asphalt Concrete and Portland Cement Concrete	\$	\$
6	103-1 <u>(S)</u>	<u>6</u>	EA	Electric Utility box - 4'6" x 8'6" x 6' #7-Box	\$	\$
7	103-1 <u>(S)</u>	8	EA	Electric Utility box - 54" x 102" x 72" #7TR Box	\$	\$
8	103-1 <u>(S)</u>	1	EA	Electric Utility box - 54" x 102" x 72" #7S Box	\$	\$
9	103-1 <u>(S)</u>	6	EA	Electric Utility box - 54" x 78" x 60" #6S Box	\$	\$
10	103-1 <u>(S)</u>	1	EA	Electric Utility box - 54" x 78" x 60" #6J Box	\$	\$
11	103-1 <u>(S)</u>	2	EA	Electric Utility box - 54" x 78" x 60" #6I Box	\$	\$
<u>11A</u>	<u>103-1</u> <u>(S)</u>	<u>1</u>	<u>EA</u>	<u>Electric Utility box – 36" x 60" x 30" #5 Box</u>	<u>\$</u>	<u>\$</u>
<u>11B</u>	<u>103-1</u> <u>(S)</u>	<u>1</u>	<u>EA</u>	<u>Electric Utility box – 36" x 60" x 54" #5S Splice Box</u>	<u>\$</u>	<u>\$</u>
12	103-1 <u>(S)</u>	<u>17</u>	EA	Electric Utility box - 24" x 36" x <u>36"</u> #3F Splice Box Full Traffic	\$	\$

PROPOSAL (SCHEDULE B) – Continued on Next Page

PROPOSAL (SCHEDULE B) – Continued from Previous Page

Item No.	Section No.	Estimated Quantity	Unit of Measure	Item Description	Item Price (In Figures)	Total (In Figures)
13	103-1 (S)	14	EA	Electric Utility box - 24" x 36" x 26" #3 Splice Box	\$	\$
14	103-1 (S)	4	EA	Electric Utility box - 24" x 36" x 26" #2-Box	\$	\$
14A	103-1 (S)	1	EA	Electric Utility box – 17" x 36" x 30" #2F Box	\$	\$
14B	103-1 (S)	2	EA	Electric Utility box – 17" x 30" x 30" #2F Box	\$	\$
15	103-1 (S)	7	EA	Telephone Utility box - 48" x 78" x 48" T8-Box	\$	\$
16	103-1 (S)	7	EA	Telephone Utility box - 30" x 48" x 36" T4-Box	\$	\$
17	103-1 (S)	9	EA	Telephone Utility box - 17" x 30" x 24" T3-Box	\$	\$
18	103-1 (S)	13	EA	Fiber Utility box - 30" x 48" x 24" B-48 Box	\$	\$
19	103-1 (S)	21	EA	Fiber Utility box - 24" x 36" x 14" B-40 Box	\$	\$
20	103-1 (S)	33	EA	CATV Utility Box - 20" x 42" x 24" B-44 Box	\$	\$
21	103-1 (S)	2	EA	Telephone Utility box - 30" x 60" x 36" T2-Box	\$	\$
22	103-1 (S)	392	LF	Utility Trench Section D - 24x60	\$	\$
23	103-1 (S)	25	LF	Utility Trench Section D1 - 36x60	\$	\$
24	103-1 (S)	90	LF	Utility Trench Section D2 - 24x53	\$	\$
25	103-1 (S)	46	LF	Utility Trench Section D3 - 42x63	\$	\$
26	103-1 (S)	19	LF	Utility Trench Section D4 - 42x63	\$	\$

PROPOSAL (SCHEDULE B) – Continued on Next Page

PROPOSAL (SCHEDULE B) – Continued from Previous Page

Item No.	Section No.	Estimated Quantity	Unit of Measure	Item Description	Item Price (In Figures)	Total (In Figures)
27	103-1 <u>(S)</u>	332	LF	Utility Trench Section D5 - 24x58	\$	\$
28	103-1 <u>(S)</u>	45	LF	Utility Trench Section D6 - 36x58	\$	\$
29	103-1 <u>(S)</u>	30	LF	Utility Trench Section D7 - 36x64	\$	\$
30	103-1 <u>(S)</u>	22	LF	Utility Trench Section D8 - 42x62	\$	\$
31	103-1 <u>(S)</u>	17	LF	Utility Trench Section D9 - 36x65	\$	\$
32	103-1 <u>(S)</u>	133	LF	Utility Trench Section D10 - 18x56	\$	\$
33	103-1 <u>(S)</u>	15	LF	Utility Trench Section D11 - 36x65	\$	\$
33A	<u>103-1</u> <u>(S)</u>	<u>78</u>	<u>LF</u>	<u>Utility Trench Section D12 – 24x60</u>	<u>\$</u>	<u>\$</u>
34	103-1 <u>(S)</u>	58	LF	Utility Trench Section D14 - 42x62	\$	\$
35	103-1 <u>(S)</u>	116	LF	Utility Trench Section D15 - 42x62	\$	\$
36	103-1 <u>(S)</u>	24	LF	Utility Trench Section D16 - 18x52	\$	\$
37	103-1 <u>(S)</u>	93	LF	Utility Trench Section D17 - 30x65	\$	\$
38	103-1 <u>(S)</u>	230	LF	Utility Trench Section D18 - 36x60	\$	\$
39	103-1 <u>(S)</u>	67	LF	Utility Trench Section D19 - 42x62	\$	\$
40	103-1 <u>(S)</u>	95	LF	Utility Trench Section D20 - 24x60	\$	\$
41	103-1 <u>(S)</u>	35	LF	Utility Trench Section D21 - 30x58	\$	\$
42	103-1 <u>(S)</u>	16	LF	Utility Trench Section D22 - 30x60	\$	\$
43	103-1 <u>(S)</u>	67	LF	Utility Trench Section D23 - 30x63	\$	\$

PROPOSAL (SCHEDULE B) – Continued on Next Page

PROPOSAL (SCHEDULE B) – Continued from Previous Page

Item No.	Section No.	Estimated Quantity	Unit of Measure	Item Description	Item Price (In Figures)	Total (In Figures)
44	103-1 <u>(S)</u>	431	LF	Utility Trench Section D24 - 24x56	\$	\$
45	103-1 <u>(S)</u>	198	LF	Utility Trench Section D25 - 36x64	\$	\$
46	103-1 <u>(S)</u>	14	LF	Utility Trench Section D26 - 30x60	\$	\$
47	103-1 <u>(S)</u>	32	LF	Utility Trench Section D28 - 30x58	\$	\$
48	103-1 <u>(S)</u>	63	LF	Utility Trench Section D29 - 42x63	\$	\$
49	103-1 <u>(S)</u>	32	LF	Utility Trench Section D30 - 30x58	\$	\$
50	103-1 <u>(S)</u>	83	LF	Utility Trench Section D31 - 24x55	\$	\$
51	103-1 <u>(S)</u>	135	LF	Utility Trench Section D32 - 30x60	\$	\$
52	103-1 <u>(S)</u>	67	LF	Utility Trench Section D33 - 30x60	\$	\$
53	103-1 <u>(S)</u>	72	LF	Utility Trench Section D34 - 30x54	\$	\$
54	103-1 <u>(S)</u>	203	LF	Utility Trench Section D35 - 24x58	\$	\$
55	103-1 <u>(S)</u>	40	LF	Utility Trench Section D36 - 36x70	\$	\$
56	103-1 <u>(S)</u>	60	LF	Utility Trench Section D37 - 36x65	\$	\$
57	103-1 <u>(S)</u>	21	LF	Utility Trench Section D38 - 24x58	\$	\$
58	103-1 <u>(S)</u>	36	LF	Utility Trench Section D39 - 18x58	\$	\$
59	103-1 <u>(S)</u>	33	LF	Utility Trench Section D40 - 24x53	\$	\$
60	103-1 <u>(S)</u>	10	LF	Utility Trench Section D41 - 36x70	\$	\$
61	103-1 <u>(S)</u>	55	LF	Utility Trench Section D42 - 36x65	\$	\$

PROPOSAL (SCHEDULE B) – Continued on Next Page

PROPOSAL (SCHEDULE B) – Continued from Previous Page

Item No.	Section No.	Estimated Quantity	Unit of Measure	Item Description	Item Price (In Figures)	Total (In Figures)
62	103-1 (S)	42	LF	Utility Trench Section D43 - 36x64	\$	\$
63	103-1 (S)	66	LF	Utility Trench Section D44 - 36x65	\$	\$
64	103-1 (S)	23	LF	Utility Trench Section D45 - 42x55	\$	\$
65	103-1 (S)	17	LF	Utility Trench Section D46 - 30x65	\$	\$
66	103-1 (S)	25	LF	Utility Trench Section D48 - 30x58	\$	\$
67	103-1 (S)	36	LF	Utility Trench Section D49 - 24x58	\$	\$
68	103-1 (S)	18	LF	Utility Trench Section D50 - 18x58	\$	\$
69	103-1 (S)	60	LF	Utility Trench Section D51 - 42x63	\$	\$
70	103-1 (S)	31	LF	Utility Trench Section D52 - 42x63	\$	\$
71	103-1 (S)	31	LF	Utility Trench Section D53 - 42x54	\$	\$
72	103-1 (S)	28	LF	Utility Trench Section D54 - 24x62	\$	\$
73	103-1 (S)	46	LF	Utility Trench Section D55 - 30x53	\$	\$
74	103-1 (S)	19	LF	Utility Trench Section D56 - 30x55	\$	\$
75	103-1 (S)	17	LF	Utility Trench Section D57 - 30x61	\$	\$
76	103-1 (S)	39	LF	Utility Trench Section D58 - 36x65	\$	\$
77	103-1 (S)	74	LF	Utility Trench Section D59 - 18x56	\$	\$
78	103-1 (S)	11	LF	Utility Trench Section D60 - 30x64	\$	\$
79	103-1 (S)	17	LF	Utility Trench Section D61 - 36x60	\$	\$

PROPOSAL (SCHEDULE B) – Continued on Next Page

PROPOSAL (SCHEDULE B) – Continued from Previous Page

Item No.	Section No.	Estimated Quantity	Unit of Measure	Item Description	Item Price (In Figures)	Total (In Figures)
<u>79A</u>	<u>103-1</u> <u>(S)</u>	<u>57</u>	<u>LF</u>	<u>Utility Trench Section D62 – 36x64</u>	<u>\$</u>	<u>\$</u>
80	103-1 <u>(S)</u>	7	LF	Utility Trench Section D63 - 24x58	\$	\$
81	103-1 <u>(S)</u>	39	LF	Utility Trench Section D64 - 42x54	\$	\$
82	103-1 <u>(S)</u>	7	LF	Utility Trench Section D65 - 24x57	\$	\$
83	103-1 <u>(S)</u>	32	LF	Utility Trench Section D66 - 30x56	\$	\$
84	103-1 <u>(S)</u>	62	LF	Utility Trench Section F - 24x59	\$	\$
85	103-1 <u>(S)</u>	32	LF	Utility Trench Section D67 - 42x63	\$	\$
86	103-1 <u>(S)</u>	<u>38</u>	LF	Utility Trench Section D68 - 30x60	\$	\$
87	103-1 <u>(S)</u>	<u>45</u>	LF	Utility Trench Section <u>D70 42x48</u>	\$	\$
<u>87A</u>	<u>103-1</u> <u>(S)</u>	<u>38</u>	<u>LF</u>	<u>Utility Trench Section D71 30x52</u>	<u>\$</u>	<u>\$</u>
88	103-1 <u>(S)</u>	57	LF	Utility Trench Section F1 - 42x54	\$	\$
89	103-1 <u>(S)</u>	11	LF	Utility Trench Section F2 - 42x54	\$	\$
90	103-1 <u>(S)</u>	25	LF	Utility Trench Section F5 - 30x59	\$	\$
91	103-1 <u>(S)</u>	51	LF	Utility Trench Section F6 - 18x52	\$	\$
92	103-1 <u>(S)</u>	58	LF	Utility Trench Section F7 - 12x52	\$	\$
<u>92A</u>	<u>103-1</u> <u>(S)</u>	<u>20</u>	<u>LF</u>	<u>Utility Trench Section F8 – 30x46</u>	<u>\$</u>	<u>\$</u>
<u>92B</u>	<u>103-1</u> <u>(S)</u>	<u>10</u>	<u>LF</u>	<u>Utility Trench Section F9– 18x46</u>	<u>\$</u>	<u>\$</u>
<u>92C</u>	<u>103-1</u> <u>(S)</u>	<u>754</u>	<u>LF</u>	<u>Utility Trench Section F10 – 18x46</u>	<u>\$</u>	<u>\$</u>

PROPOSAL (SCHEDULE B) – Continued on Next Page

PROPOSAL (SCHEDULE B) – Continued from Previous Page

Item No.	Section No.	Estimated Quantity	Unit of Measure	Item Description	Item Price (In Figures)	Total (In Figures)
93	103-1 <u>(S)</u>	181	LF	Utility Trench Section G - 36x59	\$	\$
94	103-1 <u>(S)</u>	28	LF	Utility Trench Section G1 - 24x50	\$	\$
95	103-1 <u>(S)</u>	45	LF	Utility Trench Section G2 - 24x56	\$	\$
96	103-1 <u>(S)</u>	59	LF	Utility Trench Section G3 - 30x58	\$	\$
97	103-1 <u>(S)</u>	30	LF	Utility Trench Section G4 - 12x50	\$	\$
98	103-1 <u>(S)</u>	56	LF	Utility Trench Section G7 - 30x60	\$	\$
99	103-1 <u>(S)</u>	<u>196</u>	LF	Utility Trench Section H - 12x43	\$	\$
100	103-1 <u>(S)</u>	106	LF	Utility Trench Section H1 - 18x43	\$	\$
101	103-1 <u>(S)</u>	49	LF	Utility Trench Section H2 - 30x43	\$	\$
102	103-1 <u>(S)</u>	113	LF	Utility Trench Section H3 - 18x41	\$	\$
103	103-1 <u>(S)</u>	<u>167</u>	LF	Utility Trench Section H5 - 30x43	\$	\$
104	103-1 <u>(S)</u>	<u>363</u>	LF	Utility Trench Section H6 - 12x41	\$	\$
105	103-1 <u>(S)</u>	50	LF	Utility Trench Section <u>H7 – 30x41</u>	\$	\$
106	103-1 <u>(S)</u>	41	LF	Utility Trench Section <u>H8 – 24x49</u>	\$	\$
107	103-1 <u>(S)</u>	67	LF	Utility Trench Section <u>H9 – 18x48</u>	\$	\$
108	103-1 <u>(S)</u>	111	LF	Utility Trench Section <u>H10 – 18x43</u>	\$	\$
109	103-1 <u>(S)</u>	<u>598</u>	LF	Utility Trench Section <u>H11 – 18x37</u>	\$	\$
110	103-1 <u>(S)</u>	94	LF	Utility Trench Section <u>H12- 30x53</u>	\$	\$

PROPOSAL (SCHEDULE B) – Continued from Previous Page

PROPOSAL (SCHEDULE B) – Continued from Previous Page

Item No.	Section No.	Estimated Quantity	Unit of Measure	Item Description	Item Price (In Figures)	Total (In Figures)
111	103-1 <u>(S)</u>	17	LF	Utility Trench Section <u>H13 – 72x47</u>	\$	\$
112	103-1 <u>(S)</u>	31	LF	Utility Trench Section <u>H14 – 42x42</u>	\$	\$
113	103-1 <u>(S)</u>	129	LF	Utility Trench Section <u>H15 – 24x53</u>	\$	\$
114	103-1 <u>(S)</u>	47	LF	Utility Trench Section <u>H16- 30x53</u>	\$	\$
115	103-1 <u>(S)</u>	16	LF	Utility Trench Section <u>H17 – 24x51</u>	\$	\$
<u>115A</u>	<u>103-1</u> <u>(S)</u>	<u>69</u>	<u>LF</u>	<u>Utility Trench</u> <u>Section H18 – 42x52</u>	<u>\$</u>	<u>\$</u>
116	103-1 <u>(S)</u>	39	LF	Utility Trench Section <u>H19- 30x53</u>	\$	\$
117	103-1 <u>(S)</u>	<u>20</u>	LF	Utility Trench Section <u>H20 – 18x48</u>	\$	\$
<u>117A</u>	<u>103-1</u> <u>(S)</u>	<u>140</u>	<u>LF</u>	<u>Utility Trench</u> <u>Section L-18x41</u>	<u>\$</u>	<u>\$</u>
118	103-1 <u>(S)</u>	201	LF	Utility Trench Section <u>L1 – 18x36</u>	\$	\$
119	103-1 <u>(S)</u>	136	LF	Utility Trench Section <u>L2 – 18x41</u>	\$	\$
120	103-1 <u>(S)</u>	69	LF	Utility Trench Section <u>L3 – 12x50</u>	\$	\$
121	103-1 <u>(S)</u>	184	LF	Utility Trench Section <u>L5 – 12x36</u>	\$	\$
122	103-1 <u>(S)</u>	<u>246</u>	LF	Utility Trench Section <u>L6 – 18x41</u>	\$	\$
123	103-1 <u>(S)</u>	137	LF	Utility Trench Section <u>L7 – 18x35</u>	\$	\$
124	103-1 <u>(S)</u>	38	LF	Utility Trench Section <u>L8 – 18x29</u>	\$	\$
125	103-1 <u>(S)</u>	176	LF	Utility Trench Section L9 - 12x33	\$	\$
126	103-1 <u>(S)</u>	54	LF	Utility Trench Section L10 - 18x35	\$	\$

PROPOSAL (SCHEDULE B) – Continued on Next Page

PROPOSAL (SCHEDULE B) – Continued from Previous Page

Item No.	Section No.	Estimated Quantity	Unit of Measure	Item Description	Item Price (In Figures)	Total (In Figures)
127	103-1 <u>(S)</u>	46	LF	Utility Trench Section L11 - 24x39	\$	\$
128	103-1 <u>(S)</u>	173	LF	Utility Trench Section L12 - 18x51	\$	\$
129	103-1 <u>(S)</u>	73	LF	Utility Trench Section L13 - 12x38	\$	\$
130	103-1 <u>(S)</u>	18	LF	Utility Trench Section L14 - 18x39	\$	\$
131	103-1 <u>(S)</u>	164	LF	Utility Trench Section L15 - 12x37	\$	\$
<u>131A</u>	<u>103-1</u> <u>(S)</u>	<u>74</u>	<u>LF</u>	<u>Utility Trench Section L16 – 18x36</u>	<u>\$</u>	<u>\$</u>
<u>131B</u>	<u>103-1</u> <u>(S)</u>	<u>9</u>	<u>LF</u>	<u>Utility Trench Section L19 – 18x36</u>	<u>\$</u>	<u>\$</u>
132	103-1 <u>(S)</u>	<u>771</u>	LF	Utility Trench Section P - 12x54	\$	\$
133	103-1 <u>(S)</u>	13	LF	Utility Trench Section P1 - 18x54	\$	\$
134	103-1 <u>(S)</u>	61	LF	Utility Trench Section P2 - 12x56	\$	\$
135	103-1 <u>(S)</u>	82	LF	Utility Trench Section P3 - 24x52	\$	\$
136	103-1 <u>(S)</u>	83	LF	Utility Trench Section P4 - 24x58	\$	\$
137	103-1 <u>(S)</u>	139	LF	Utility Trench Section P5 - 12x50	\$	\$
138	103-1 <u>(S)</u>	40	LF	Utility Trench Section P6 - 12x55	\$	\$
139	103-1 <u>(S)</u>	39	LF	Utility Trench Section P7 - 18x51	\$	\$
140	103-1 <u>(S)</u>	17	LF	Utility Trench Section P8 - 18x53	\$	\$
141	103-1 <u>(S)</u>	22	LF	Utility Trench Section P9 - 18x56	\$	\$

PROPOSAL (SCHEDULE B) – Continued on Next Page

PROPOSAL (SCHEDULE B) – Continued from Previous Page

Item No.	Section No.	Estimated Quantity	Unit of Measure	Item Description	Item Price (In Figures)	Total (In Figures)
142	103-1 <u>(S)</u>	25	LF	Utility Trench Section P10 - 18x49	\$	\$
143	103-1 <u>(S)</u>	81	LF	Utility Trench Section P11 - 18x58	\$	\$
144	103-1 <u>(S)</u>	102	LF	Utility Trench Section P12 - 12x51	\$	\$
145	103-1 <u>(S)</u>	82	LF	Utility Trench Section P14 - 18x52	\$	\$
146	103-1 <u>(S)</u>	338	LF	Utility Trench Section P15 - 12x52	\$	\$
147	103-1 <u>(S)</u>	40	LF	Utility Trench Section P17 - 18x53	\$	\$
148	103-1 <u>(S)</u>	<u>381</u>	LF	Utility Trench Section P18 - 12x54	\$	\$
149	103-1 <u>(S)</u>	50	LF	Utility Trench Section P19 - 18x52	\$	\$
150	103-1 <u>(S)</u>	83	LF	Utility Trench Section P20 - 18x57	\$	\$
151	103-1 <u>(S)</u>	<u>69</u>	LF	Utility Trench Section P21 - 12x52	\$	\$
152	103-1 <u>(S)</u>	55	LF	Utility Trench Section P22 - 18x53	\$	\$
153	103-1 <u>(S)</u>	72	LF	Utility Trench Section P23 - 12x52	\$	\$
154	103-1 <u>(S)</u>	12	LF	Utility Trench Section P24 - 12x30	\$	\$
<u>154A</u>	<u>103-1</u> <u>(S)</u>	<u>56</u>	<u>LF</u>	<u>Utility Trench Section P25 – 12x50</u>	<u>\$</u>	<u>\$</u>
155	103-1 <u>(S)</u>	12	LF	Utility Trench Section R - 24x49	\$	\$
156	103-1 <u>(S)</u>	34	LF	Utility Trench Section R1 - 18x50	\$	\$
<u>156A</u>	<u>103-1</u> <u>(S)</u>	<u>36</u>	<u>LF</u>	<u>Utility Trench Section R2 – 18x44</u>	<u>\$</u>	<u>\$</u>

PROPOSAL (SCHEDULE B) – Continued on Next Page

PROPOSAL (SCHEDULE B) – Continued from Previous Page

Item No.	Section No.	Estimated Quantity	Unit of Measure	Item Description	Item Price (In Figures)	Total (In Figures)
<u>156B</u>	<u>103-1 (S)</u>	<u>55</u>	<u>LF</u>	<u>Utility Trench Section R3 – 18x42</u>	<u>\$</u>	<u>\$</u>
157	103-1 (S)	26	LF	Utility Trench Section S - 12x49	\$	\$
158	103-1 (S)	45	LF	Utility Trench Section S1 - 12x49	\$	\$
<u>158A</u>	<u>103-1 (S)</u>	<u>74</u>	<u>LF</u>	<u>Utility Trench Section S2 – 18x50</u>	<u>\$</u>	<u>\$</u>
159	103-1 (S)	208	LF	Utility Trench Section U - 18x41	\$	\$
160	103-1 (S)	130	LF	Utility Trench Section U1 - 12x50	\$	\$
161	103-1 (S)	48	LF	Utility Trench Section U2 - 24x52	\$	\$
162	103-1 (S)	178	LF	Utility Trench Section U3 - 24x58	\$	\$
163	103-1 (S)	32	LF	Utility Trench Section U4 - 12x50	\$	\$
164	103-1 (S)	36	LF	Utility Trench Section U5 - 18x50	\$	\$
165	103-1 (S)	59	LF	Utility Trench Section U6 - 18x51	\$	\$
166	103-1 (S)	94	LF	Utility Trench Section U7 - 18x53	\$	\$
<u>166A</u>	<u>103-1 (S)</u>	<u>28</u>	<u>LF</u>	<u>Utility Trench Section U8 – 12x35</u>	<u>\$</u>	<u>\$</u>
<u>166B</u>	<u>103-1 (S)</u>	<u>19</u>	<u>LF</u>	<u>Utility Trench Section U9 – 12x41</u>	<u>\$</u>	<u>\$</u>
167	103-1 (S)	<u>187</u>	LF	Utility Trench Section V - 18x56	\$	\$
168	103-1 (S)	72	LF	Utility Trench Section V1 - 18x36	\$	\$
169	103-1 (S)	32	LF	Utility Trench Section V2 - 18x58	\$	\$

PROPOSAL (SCHEDULE B) – Continued on Next Page

PROPOSAL (SCHEDULE B) – Continued from Previous Page

Item No.	Section No.	Estimated Quantity	Unit of Measure	Item Description	Item Price (In Figures)	Total (In Figures)
170	103-1 <u>(S)</u>	55	LF	Utility Trench Section V3 - 12x51	\$	\$
<u>170A</u>	<u>103-1</u> <u>(S)</u>	<u>21</u>	<u>LF</u>	<u>Utility Trench Section V4 - 18x36</u>	<u>\$</u>	<u>\$</u>
171	103-1 <u>(S)</u>	1,380	LF	Utility Trench Section W - 6x35	\$	\$
172	103-1 <u>(S)</u>	920	LF	Utility Trench Section W1 - 12x35	\$	\$
173	103-1 <u>(S)</u>	38	LF	Utility Trench Section W2 - 18x35	\$	\$
174	103-1 <u>(S)</u>	37	LF	Utility Trench Section W3 - 18x49	\$	\$
175	103-1 <u>(S)</u>	25	LF	Utility Trench Section W4 - 18x41	\$	\$
176	103-1 <u>(S)</u>	144	LF	Utility Trench Section W5 - 12x51	\$	\$
177	103-1 <u>(S)</u>	24	LF	Utility Trench Section W6 - 12x34	\$	\$
178	103-1 <u>(S)</u>	6	LF	Utility Trench Section W7 - 12x33	\$	\$
179	103-1 <u>(S)</u>	5	LF	Utility Trench Section W8 - 12x36	\$	\$
180	103-1 <u>(S)</u>	<u>49</u>	LF	Utility Trench Section W9 - 24x34	\$	\$
181	103-1 <u>(S)</u>	10	LF	Utility Trench Section W10 - 18x35	\$	\$
182	103-1 <u>(S)</u>	333	LF	Utility Trench Section W11 - 18x39	\$	\$
183	103-1 <u>(S)</u>	14	LF	Utility Trench Section W12 - 12x35	\$	\$
184	103-1 <u>(S)</u>	20	LF	Utility Trench Section W13 - 12x35	\$	\$
185	103-1 <u>(S)</u>	<u>150</u>	LF	Jack and Bore Utility Crossing - Trench Section H16 - 36" DIA Casing	\$	\$

PROPOSAL (SCHEDULE B) – Continued on Next Page

PROPOSAL (SCHEDULE B) – Continued from Previous Page

Item No.	Section No.	Estimated Quantity	Unit of Measure	Item Description	Item Price (In Figures)	Total (In Figures)
186	103-1 (S)	<u>150</u>	LF	Jack and Bore Utility Crossing - Trench Section V3 - <u>30" Casing</u>	\$	\$
187	103-1 (S)	<u>150</u>	LF	Jack and Bore Utility Crossing - Trench Section W - 24" DIA Casing	\$	\$
188	103-1 (S)	90	LF	Jack and Bore Utility Crossing - Trench Section U7 - 18" DIA Casing	\$	\$
189	103-1 (S)	90	LF	Jack and Bore Utility Crossing - Trench Section V - 12" DIA Casing	\$	\$
<u>189</u>	103-1 (S)	90	LF	Jack and Bore Utility Crossing - Trench Section H6 - 10" DIA Casing	\$	\$
191	103-1 (S)	2	LS	Jack and Bore Preparation - Pits - Jacking Pit	\$	\$
192	103-1 (S)	2	LS	Jack and Bore Preparation - Pits - Receiving Pit	\$	\$
193	103-1 (S)	2,667	CY	Jack and Bore Preparation - Backfill and Compaction of Pits - Middlefield Road	\$	\$
194	103-1 (S)	160	LF	Jack and Bore Preparation - Dewatering - Middlefield Road	\$	\$
195	103-1 (S)	160	LF	Jack and Bore Preparation - Pavement Restoration - Middlefield Road	\$	\$

PROPOSAL (SCHEDULE B) – Continued on Next Page

PROPOSAL (SCHEDULE B) – Continued from Previous Page


Item No.	Section No.	Estimated Quantity	Unit of Measure	Item Description	Item Price (In Figures)	Total (In Figures)
196	103-1 (S)	160	LF	Jack and Bore Preparation—Shoring—Middlefield Road	\$	\$
197	103-1 (S)	1,500	CY	Jack and Bore Preparation—Backfill and Compaction of Pits—UP R/W	\$	\$
198	103-1 (S)	90	LF	Jack and Bore Preparation—Dewatering—UP R/w	\$	\$
199	103-1 (S)	90	LF	Jack and Bore Preparation—Shoring—UP R/W	\$	\$
<u>190</u>	<u>113 (S)</u>	<u>450</u>	<u>LF</u>	<u>Jack and Bore Crossing #1 (Middlefield Road): One 36", one 30" and one 24" Steel Casings (150 LF Each)</u>	\$	\$
<u>191</u>	<u>113 (S)</u>	<u>180</u>	<u>LF</u>	<u>Jack and Bore Crossing #2 (Redwood Junction): One 10" and one 18" Steel Casing (90 LF Each)</u>	\$	\$
<u>192</u>	105-3	1	LS	Trench Safety	\$	\$
SCHEDULE B SUB-TOTAL						\$

PROPOSAL SUMMARY

A BID IS REQUIRED FOR THE ENTIRE WORK DESCRIBED HEREIN FOR SCHEDULE A AND SCHEDULE B. THE AWARD OF CONTRACT, IF AWARDED, WILL BE MADE ON THE BASIS OF THE LOWEST SUM TOTAL OF BOTH SCHEDULE A AND SCHEDULE B.

SCHEDULE A SUB-TOTAL	\$
SCHEDULE B SUB-TOTAL	\$
TOTAL BASE BID (SCHEDULE A + B)	\$



APPROVED: 
 DATE: 1/8/21
 JAMES C. PORTER, DIRECTOR OF PUBLIC WORKS
 R. C. E. # 48056 / EXPIRES 12-31-2021

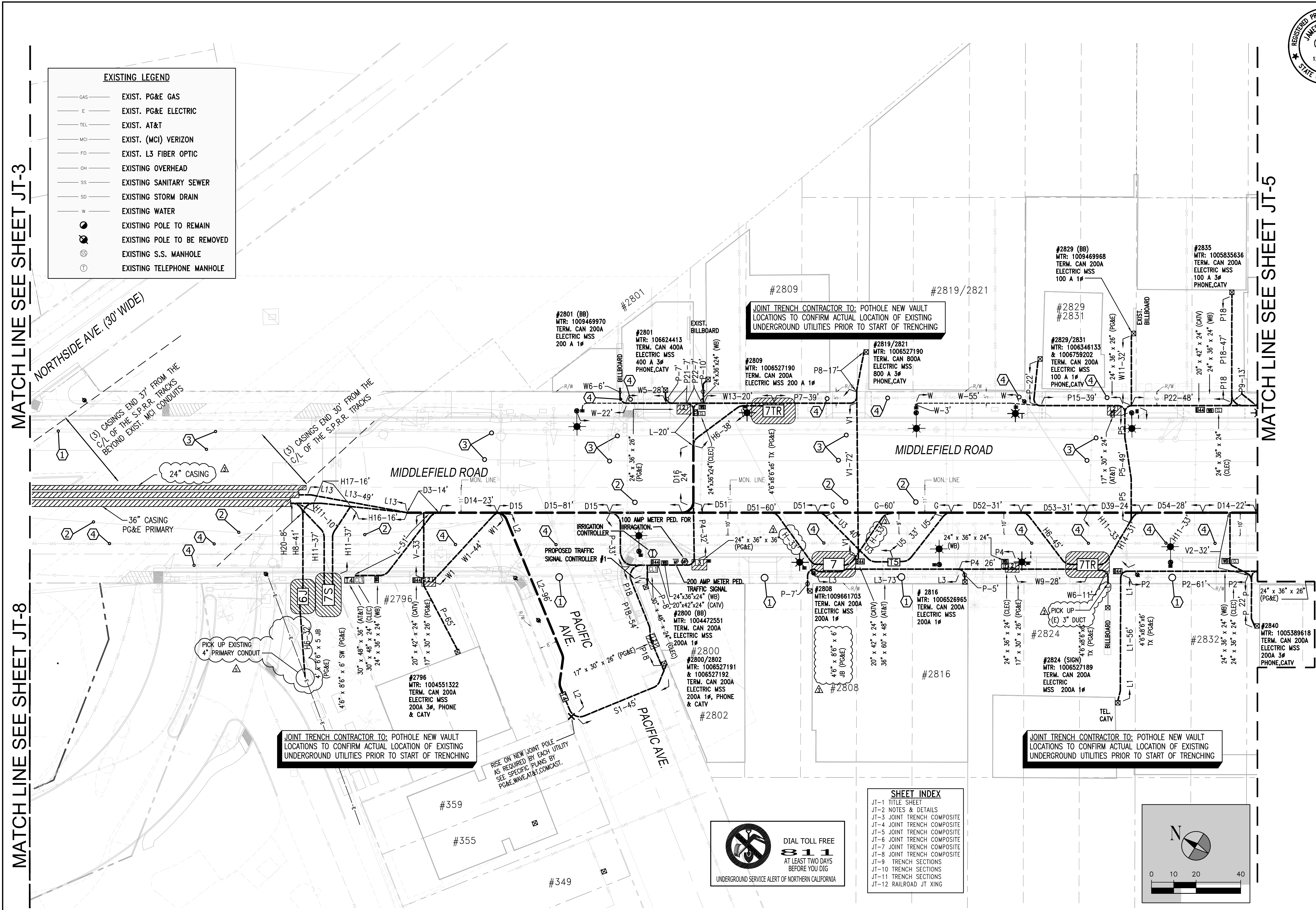
EXISTING LEGEND	
---	EXIST. PG&E GAS
---	EXIST. PG&E ELECTRIC
---	EXIST. AT&T
---	EXIST. (MCI) VERIZON
---	EXIST. L3 FIBER OPTIC
---	EXISTING OVERHEAD
---	EXISTING SANITARY SEWER
---	EXISTING STORM DRAIN
---	EXISTING WATER
●	EXISTING POLE TO REMAIN
⊗	EXISTING POLE TO BE REMOVED
⊙	EXISTING S.S. MANHOLE
⊕	EXISTING TELEPHONE MANHOLE

PROPOSED LEGEND	
---	PROPOSED JOINT TRENCH MAIN
---	PROPOSED JOINT TRENCH MINOR
7S	4'-6" x 8'-6" x 6' SWITCH BOX (PG&E) WORKING SPACE SHOWN MAINTAIN 30' UNOBSTRUCTED OVERHEAD CLEARANCE OVER BOX
7	4'-6" x 8'-6" x 6' SPICE BOX (PG&E) WORKING SPACE SHOWN MAINTAIN 30' UNOBSTRUCTED OVERHEAD CLEARANCE OVER BOX
7TR	4'-6" x 8'-6" x 6' DUPLEX TXFMR. (PG&E) WORKING SPACE SHOWN MAINTAIN 30' UNOBSTRUCTED OVERHEAD CLEARANCE OVER TRANSFORMER VAULT
6S	4' x 6'-6" x 5' SWITCH BOX (PG&E) WORKING SPACE SHOWN MAINTAIN 30' UNOBSTRUCTED OVERHEAD CLEARANCE OVER BOX
6J	4' x 6'-6" x 5' SPICE BOX (PG&E) WORKING SPACE SHOWN MAINTAIN 30' UNOBSTRUCTED OVERHEAD CLEARANCE OVER BOX
6i	4' x 6'-6" x 5' INTERRUPTER (PG&E) WORKING SPACE SHOWN MAINTAIN 30' UNOBSTRUCTED OVERHEAD CLEARANCE OVER BOX
5s	3' x 5' x 4'-6" SPICE BOX (PG&E) WORKING SPACE SHOWN
5	3' x 5' x 30" SECONDARY BOX (PG&E) WORKING SPACE SHOWN
3	24" x 36" x 26" SPICE BOX (PG&E) WORKING SPACE SHOWN
3SP	24" x 36" x 36" SPICE BOX (PG&E) FULL TRAFFIC RATED WORKING SPACE SHOWN
3T	17" x 30" x 26" SPICE BOX (PG&E) WORKING SPACE SHOWN
3TR	17" x 30" x 30" SPICE BOX (PG&E) TRAFFIC RATED WORKING SPACE SHOWN
T8	48" x 78" x 48" SPICE BOX (AT&T)
T5	36" x 60" x 48" SPICE BOX (AT&T)
T4	30" x 48" x 36" SPICE BOX (AT&T)
T2	30" x 60" x 36" SPICE BOX (AT&T)
T	17" x 30" x 24" SPICE BOX (AT&T)
W	20" x 42" x 24" SPICE BOX - (COMCAST)
WB	24" x 36" x 24" SPICE BOX - (WAVE)
CL	30" x 48" x 24" SPICE BOX (C.L.E.C)
CB	24" x 36" x 24" SPICE BOX (C.L.E.C)
●	STREET LIGHT WITH 30" BASE
★	PEDESTRIAN LIGHT
■	11"x17"x12" N-9" SPICE BOX (S.L.)
⊗	EXISTING JOINT POLE TO BE REMOVED
●	EXISTING JOINT POLE TO REMAIN
X	PROPOSED NEW JOINT POLE LOCATION
⊕	IRRIGATION CONTROLLER
⊙	100 AMP METER PEDESTAL (I.C. & TRAF. SIG.)
①	PROTECT IN PLACE - EXISTING MCI/VERIZON CONDUITS DURING JOINT TRENCH CONSTRUCTION
②	PROTECT IN PLACE - EXISTING CENTURY LINK CONDUITS DURING JOINT TRENCH CONSTRUCTION
③	PROTECT IN PLACE - EXISTING FIBER CONDUITS DURING JOINT TRENCH CONSTRUCTION
④	PROTECT IN PLACE - EXISTING PG&E GAS DURING JOINT TRENCH CONSTRUCTION
⑤	PROTECT IN PLACE - EXISTING PG&E ELECTRIC DURING JOINT TRENCH CONSTRUCTION

MATCH LINE SEE SHEET JT-3

MATCH LINE SEE SHEET JT-8

MATCH LINE SEE SHEET JT-5

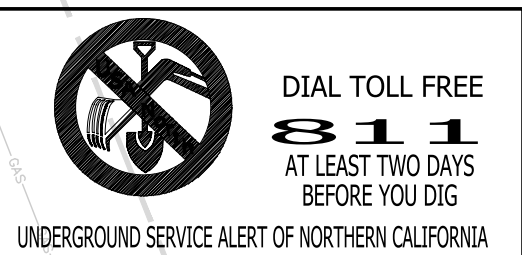


JOINT TRENCH CONTRACTOR TO: POTHOLE NEW VAULT LOCATIONS TO CONFIRM ACTUAL LOCATION OF EXISTING UNDERGROUND UTILITIES PRIOR TO START OF TRENCHING

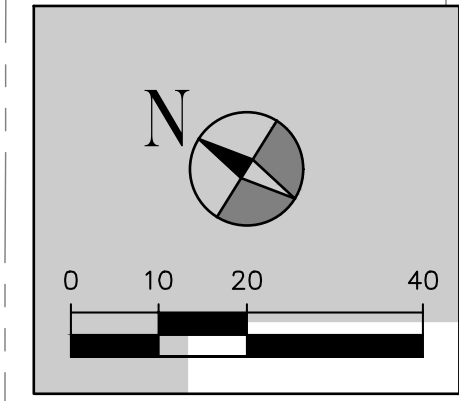
JOINT TRENCH CONTRACTOR TO: POTHOLE NEW VAULT LOCATIONS TO CONFIRM ACTUAL LOCATION OF EXISTING UNDERGROUND UTILITIES PRIOR TO START OF TRENCHING

JOINT TRENCH CONTRACTOR TO: POTHOLE NEW VAULT LOCATIONS TO CONFIRM ACTUAL LOCATION OF EXISTING UNDERGROUND UTILITIES PRIOR TO START OF TRENCHING

RISE ON NEW JOINT POLE AS REQUIRED BY EACH UTILITY SEE SPECIFIC PLANS BY PG&E, WAVE, AT&T, COMCAST.



SHEET INDEX	
JT-1	TITLE SHEET
JT-2	NOTES & DETAILS
JT-3	JOINT TRENCH COMPOSITE
JT-4	JOINT TRENCH COMPOSITE
JT-5	JOINT TRENCH COMPOSITE
JT-6	JOINT TRENCH COMPOSITE
JT-7	JOINT TRENCH COMPOSITE
JT-8	JOINT TRENCH COMPOSITE
JT-9	TRENCH SECTIONS
JT-10	TRENCH SECTIONS
JT-11	TRENCH SECTIONS
JT-12	RAILROAD JT XING



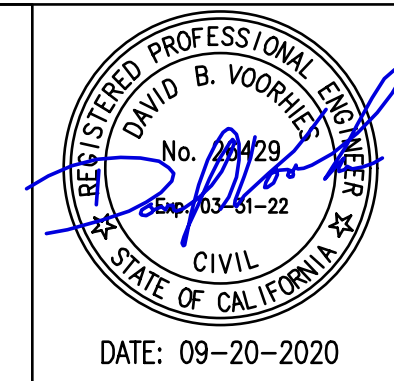
SUBSTRUCTURE LOCATIONS MUST BE STAKED BY A LICENSED SURVEYOR PRIOR TO CONSTRUCTION. SEE CONSTRUCTION NOTES NOTE 9 THIS SHEET REGARDING EXISTING CONDITIONS.

CONTRACTOR NOTES:
 "POT HOLE" EXISTING PAVEMENT TO VERIFY EXISTING PAVEMENT SECTION CONSTRUCTION, PRIOR TO INSTALLING THE "JOINT TRENCH".
 OPEN-CUT TRENCHING MAY NOT BE PREFERRED METHOD OF CONSTRUCTION. CONTRACTOR MAY USE THE OPTION OF DIRECTIONAL DRILLING TO INSTALL CONDUITS.
 NO ADDITIONAL PAYMENTS WILL BE MADE BASED ON EXISTING CONDITIONS.

NOTE:
 PRIOR TO ENERGIZING THIS PROJECT A PSE/PUE WILL NEED TO BE RECORDED FOR ALL UTILITIES WITHIN THIS PROJECT, INCLUDING THE "WORKING SPACE" REQUIRED AROUND ALL EQUIPMENT.

NOTE TO CONTRACTOR:
 FOR CONTRACTOR'S WORK RESPONSIBILITY, REFER TO JOINT TRENCH SHEET (JT-2)

Vizion Utility PARTNERS
 UTILITY ENGINEERS, CONSULTANTS & STREETLIGHT DESIGN
 7901 STONERIDGE DR, SUITE 200 PLEASANTON, CA 94568
 Tel (925) 682-2114



MIDDLEFIELD ROAD UNDERGROUND UTILITY DISTRICT (PHASE II) JOINT TRENCH COMPOSITE		SCALE: 1"=20'
ADDENDUM	01-08-2021	DESIGNED BY: M.W.
ADDENDUM	12-23-2020	CHECKED BY: D.V.
ISSUE FOR BID	10-19-2020	DRAWN BY: M.W.
REVISION	DATE	JAMES C. PORTER, DIRECTOR OF PUBLIC WORKS SAN MATEO COUNTY
VIZION UTILITY PARTNERS PROJECT MANAGER T. NGUYEN		FOR REDUCED PLANS ORIGINAL SCALE IS IN INCHES
DATE: 09-20-2020		VIZION DATE LAST WORKED ON: 12-21-2020
DATE: 12-28-2020		FILE NO.: 15-646
555 COUNTY CENTER, 5th FLOOR REDWOOD CITY, CALIFORNIA 94063		JT-4 (REV1) SHEET 120 OF 140

FILENAME: \\D:\PROJ\PROJECTS\2015\15-646 MIDDLEFIELD ROAD, REDWOOD CITY\WORK\PS-15-646 JT-WORKING (JT-4)